



*Trojans*



**OPPONENTS**



# 2015-16 OPPONENTS

## LOYOLA MARYMOUNT

Sat., Nov. 14, 2015, 2 p.m.,  
Boulder, Colo.



Charity Elliott



### SCHOOL INFORMATION

Location .....Los Angeles, Calif.  
Founded.....1911  
Enrollment .....6,064  
Nickname.....Lions  
Colors .....Crimson, Navy, Gray,  
Marymount Blue  
Conference .....West Coast  
Arena (Capacity) .....Gersten Pavilion  
(4,156)  
President .....Dr. Timothy Law Snyder  
Athletic Director.....Dr. William Husak

### SPORTS INFORMATION

WBB SID.....Sarah Finney  
Office.....310-338-5798  
Cell.....424-207-9359  
E-Mail.....sfinney1@lmu.edu  
Fax .....310-338-2703  
Press Row Phone.....310-258-8733  
Website .....lmlions.com

### COACHING STAFF

Head Coach .....Charity Elliott  
Record at LMU (years) .....30-64 (3)  
Career Record (years)...211-193 (13)  
Assistant Coach.....April Phillips  
Assistant Coach.....Chris Elliott  
Assistant Coach .....Kiva Herman

### TEAM INFORMATION

2014-15 Record .....7-24  
2014-15 Conference .....4-14 (7th)  
2015 Postseason.....DNP  
Final Ranking (AP/WBCA) .....NR  
Letterwinners Returning/Lost.....8/4  
Starters Returning/Lost.....3/2

### KEY RETURNERS (2014-15 STATS)

Deanna Johnson, 5-8, Sr., G  
(13.2 ppg, 2.2 rpg, 3.5 apg  
(10 games played))  
Leslie Lopez-Wood, 5-6, Jr., G  
(13.5 ppg, 2.8 rpg, 1.6 apg)  
Sophie Taylor, 6-0, Sr., G  
(11.7 ppg, 6.2 rpg, 1.5 apg)

### SERIES INFORMATION

Overall .....Tied 1-1  
In Boulder .....LMU 0-1  
In Los Angeles.....CU leads 1-0

## NORTHERN COLORADO

Thurs., Nov. 19, 2015, 7 p.m.,  
Boulder, Colo.



Kamie Ethridge



### SCHOOL INFORMATION

Location.....Greeley, Colo.  
Founded.....1889  
Enrollment.....12,000  
Nickname .....Bears  
Colors.....Blue and Gold  
Conference .....Big Sky  
Arena (Capacity) .....Bank of Colorado  
Arena (2,950)  
Chancellor.....Kay Norton  
Athletic Director .....Darren Dunn

### SPORTS INFORMATION

WBB SID .....Ryan Pfeifer  
Office.....970-351-3645  
Cell.....720-290-8886  
E-Mail .....ryan.pfeifer@unco.edu  
Fax .....970-351-2018  
Press Row Phone.....970-351-3645  
Website.....uncbears.com

### COACHING STAFF

Head Coach.....Kamie Ethridge  
Record at UNC (years).....22-13 (2)  
Career Record (years).....22-13 (2)  
Assistant Coach .....Kelly Moylan  
Assistant Coach.....Laurie Koehn  
Assistant Coach.....Austin Thomas

### TEAM INFORMATION

2014-15 Record .....22-13  
2014-15 Conference .....12-6 (3rd)  
2015 Postseason.....DNP  
Final Ranking (AP/WBCA) .....NR  
Letterwinners Returning/Lost.....6/4  
Starters Returning/Lost.....2/3

### KEY RETURNERS (2014-15 STATS)

Kyleigh Hiser, 5-9, Sr., G  
(8.8 ppg, 2.1 rpg, 1.5 apg)  
Savannah Scott, 5-7, So., G  
(4.3 ppg, 2.2 rpg, 1.7 apg)  
Kourtney Zadina, 6-2, Jr., F  
(7.0 ppg, 2.0 rpg, 0.5 apg)

### SERIES INFORMATION

Overall.....CU leads 10-6  
In Boulder .....CU leads 8-3  
In Greeley.....UNC leads 3-2

## KENTUCKY

Sun., Nov. 22, 2015, 12 p.m.,  
Lexington, Ky.



Matthew Mitchell



### SCHOOL INFORMATION

Location.....Lexington, Ky.  
Founded.....1865  
Enrollment.....30,000  
Nickname .....Wildcats  
Colors.....Blue and White  
Conference .....Southeastern (SEC)  
Arena (Capacity) ..Memorial Coliseum  
(8,000)  
President .....Dr. Eli Capilouto  
Athletic Director .....Mitch Barnhart

### SPORTS INFORMATION

WBB SID .....Evan Crane  
Office.....859-257-8431  
Cell.....270-559-8120  
E-Mail .....wesley.crane@uky.edu  
Fax .....859-323-4310  
Press Row Phone.....859-323-5900  
Website .....UKathletics.com

### COACHING STAFF

Head Coach.....Matthew Mitchell  
Record at UK (years).....194-81 (8)  
Career Record (years)...224-110 (10)  
Assistant Coach .....Adeniyi Amadou  
Assistant Coach .....Tamika Williams  
Assistant Coach.....Camryn Whitaker

### TEAM INFORMATION

2014-15 Record .....24-10  
2014-15 Conference .....10-6 (6th)  
2015 PostseasonNCAA Second Round  
(AP/WBCA) .....11/16  
Letterwinners Returning/Lost.....5/6  
Starters Returning/Lost.....2/3

### KEY RETURNERS (2014-15 STATS)

Makayla Epps, 5-10, Jr., G  
(14.9 ppg, 4.6 rpg, 2.9 apg)  
Janee Thompson, 5-7, Sr., PG  
(10.1 ppg, 3.0 apg, 1.7 spg)

### SERIES INFORMATION

Overall.....First Meeting

## UMASS

Fri., Nov. 27, 2015, 7:30 p.m.,  
Boulder, Colo.



Sharon Dawley



### SCHOOL INFORMATION

Location.....Amherst, Mass.  
Founded.....1863  
Enrollment.....28,140  
Colors .....Maroon and White  
Conference.....Atlantic 10  
Arena (Capacity) .....Mullins Center  
(9,493)  
President.....Robert L. Caret  
Athletic Director .....John Mcutcheon

### SPORTS INFORMATION

WBB SID .....John Sinnett  
Office.....413-687-2237  
Cell.....413-687-2237  
E-Mail .....jsinnett@admin.umass.edu  
Fax .....N/A  
Press Row Phone.....845-750-4225  
Website .....UMassAthletics.com

### COACHING STAFF

Head Coach .....Sharon Dawley  
Record at UMass (years) ..34-115 (6)  
Career Record (years)...299-263 (22)  
Assistant Coach .....Jen MacAulay  
Assistant Coach .....Yolanda Griffith  
Assistant Coach .....Chris Wiegus

### TEAM INFORMATION

2014-15 Record .....12-18  
2014-15 Conference.....5-11 (t-8th)  
2015 Postseason.....N/A  
Final Ranking (AP/WBCA) .....NR  
Letterwinners Returning/Lost.....8/5  
Starters Returning/Lost.....2/3

### KEY RETURNERS (2014-15 STATS)

Cierra Dillard, 5-9, So., G  
(10.6 ppg, 3.1 rpg, 2.5 apg)  
Amber Dillion, 5-2, Sr., G  
(4.2 ppg, 1.0 rpg, 1.1 apg)  
Rashida Timbilla, 6-1, Sr., F  
(8.3 ppg, 9.4 rpg, 4.0 apg)

### SERIES INFORMATION

Overall.....UMass leads 1-0  
In Boulder .....UMass leads 1-0



# 2015-16 OPPONENTS

## FLORIDA

Sat., Nov. 28, 2015,  
5/7:30 p.m., Boulder, Colo.



Amanda Butler



### SCHOOL INFORMATION

Location.....Gainesville, Fla.  
Founded.....1853  
Enrollment.....49,785  
Nickname.....Gators  
Colors.....Orange and Blue  
Conference.....Southeastern (SEC)  
Arena (Capacity).....Stephen C. O'Connell Center (11,373)  
President.....Dr. W. Kent Fuchs  
Athletic Director.....Jeremy N. Foley

### SPORTS INFORMATION

WBB SID.....Kathy Cafazzo  
Office.....352-375-4683, ext. 6133  
Cell.....352-316-4575  
E-Mail.....kathyc@gators.ufl.edu  
Fax.....352-375-4809  
Press Row Phone.....352-367-1801  
Website.....gatorzone.com

### COACHING STAFF

Head Coach.....Amanda Butler  
Record at UF (years).....153-112 (8)  
Career Record (years)...193-134 (10)  
Assistant Coach.....Bill Ferrara  
Assistant Coach ..Shimmy Gray-Miller  
Assistant Coach.....Murriel Page

### TEAM INFORMATION

2014-15 Record.....13-17  
2014-15 Conference.....5-11 (t-11th)  
2015 Postseason.....DNP  
Final Ranking (AP/WBCA).....NR  
Letterwinners Returning/Lost.....9/3  
Starters Returning/Lost.....4/1

### KEY RETURNERS (2014-15 STATS)

Haley Lorenzen, 6-3, So., F  
(7.1 ppg, 4.0 rpg, 1.0 bpg)  
Carlie Needles, 5-6, R-Sr., G  
(7.3 ppg, 4.6 rpg, 1.9 apg)  
Cassie Peoples, 5-6, R-Sr., G  
(9.3 ppg, 2.4 rpg, 4.2 apg)

### SERIES INFORMATION

Overall.....Tied 1-1  
In Boulder.....CU leads 1-0  
In Gainesville.....UF leads 1-0

## BALL STATE

Sat., Nov. 28, 2015,  
5/7:30 p.m., Boulder, Colo.



Brady Sallee



### SCHOOL INFORMATION

Location.....Muncie, Ind.  
Founded.....1918  
Enrollment.....17,005  
Nickname.....Cardinals  
Colors.....Cardinal and White  
Conference.....Mid-American  
Arena (Capacity).....Worthen Arena (11,500)  
President.....Dr. Paul W. Ferguson  
Interim Athletic Director.....Brian Hardin

### SPORTS INFORMATION

WBB SID.....Paula Haughn  
Office.....765-285-8242  
Cell.....765-716-1837  
E-Mail.....pmhaughn@bsu.edu  
Fax.....N/A  
Press Row Phone.....765-285-8930  
Website.....ballstatesports.com

### COACHING STAFF

Head Coach.....Brady Sallee  
Record at BSU (years).....52-47 (4)  
Career Record (years)...188-156 (12)  
Associate Coach.....Tennille Adams  
Assistant CoachAudrey McDonald-  
Spencer  
Assistant Coach.....Ryan Patterson

### TEAM INFORMATION

2014-15 Record.....17-14  
2014-15 Conference.....13-5 (2nd)  
2015 Postseason.....WNIT First Round  
Final Ranking (AP/WBCA).....NR  
Letterwinners Returning/Lost.....8/2  
Starters Returning/Lost.....4/1

### KEY RETURNERS (2014-15 STATS)

Renee Bennett, 6-5, Jr., C  
(3.5 ppg, 3.9 rpg)  
Nathalie Fontaine, 6-2, Sr., F  
(16.4 ppg, 7.1 rpg)  
Jill Morrison, 5-7, Jr., G  
(11.4 ppg, 3.6 rpg)

### SERIES INFORMATION

Overall.....First Meeting

OMNI



HOTELS®  
CLASSIC

Friday, Nov. 27



**FLORIDA**  
vs.  
**BALL STATE**  
5 p.m.



**UMASS**  
vs.  
**COLORADO**  
7:30 p.m.



Saturday, Nov. 28

**CONSOLATION**

5 p.m.

**CHAMPIONSHIP**

7:30 p.m.

### Previous Classic Winners

1987 – Houston	2001 – Colorado
1988 – Colorado	2002 – Villanova
1989 – Colorado	2003 – Colorado
1990 – Washington	2004 – LSU
1991 – Vanderbilt	2005 – Northern Iowa
1992 – Colorado	2006 – CU/Wyoming
1993 – Colorado	2007 – Clemson
1994 – Colorado	2008 – Minnesota
1995 – Louisiana Tech	2009 – Colorado
1996 – Colorado	2010 – Colorado
1997 – Colorado	2011 – Colorado
1998 – Colorado	2012 – Colorado
1999 – Colorado	2013 – Colorado
2000 – Colorado	2014 – Colorado



# 2015-16 OPPONENTS

## COLORADO STATE

Wed., Dec. 2, 2015, 7 p.m.,  
Fort Collins, Colo.



Ryan Williams



### SCHOOL INFORMATION

Location .....Fort Collins, Colo.  
Founded.....1870  
Enrollment.....26,775  
Nickname.....Rams  
Colors.....Green and Gold  
Conference.....Mountain West  
Arena (Capacity) .....Moby Arena  
(8,745)  
President.....Dr. Anthony Frank  
Athletic Director .....Joe Parker

### SPORTS INFORMATION

WBB SID .....Craig Buchanan  
Office.....970-491-6494  
Cell.....970-227-7889  
E-Mail...craigbuchanan0@gmail.com  
Fax .....970-491-1348  
Press Row Phone.....970-491-3981  
Website.....CSURams.com

### COACHING STAFF

Head Coach .....Ryan Williams  
Record at CSU (years) .....59-35 (3)  
Career Record (years)...317-188 (17)  
Assistant Coach.....Tim Moser  
Assistant Coach .....Brooke Atkinson  
Assistant Coach.....Rebecca Alvidrez

### TEAM INFORMATION

2014-15 Record .....23-8  
2014-15 Conference.....15-3 (1st)  
2015 Postseason...WNIT First Round  
Final Ranking (AP/WBCA) .....NR  
Letterwinners Returning/Lost.....7/4  
Starters Returning/Lost.....3/2

### KEY RETURNERS (2014-15 STATS)

Elin Gustavsson, 6-3, Jr., F  
(9.5 ppg, 4.7 rpg, 1.1 apg)  
Ellen Nystrom, 6-1, Jr., G  
(9.2 ppg, 6.8 rpg, 3.6 apg)  
Jamie Patrick, 5-10, Sr., G  
(8.2 ppg, 2.5 rpg, 0.6 apg)

### SERIES INFORMATION

Overall.....CU leads 35-11  
In Boulder.....CU leads 23-2  
In Fort Collins.....CU leads 12-9

## LONG BEACH STATE

Sun., Dec. 6, 2015, 3 p.m.,  
Long Beach, Calif.



Jody Wynn



### SCHOOL INFORMATION

Location .....Long Beach, Calif.  
Founded.....1949  
Enrollment.....36,822  
Nickname .....49ers  
Colors.....Black and Gold  
Conference.....Big West  
Arena (Capacity)Walter Pyramid  
(4,200)  
President.....Dr. Jane Close Conoley  
Athletic Director.....Vic Cegles

### SPORTS INFORMATION

WBB SID .....Andrea Ohta  
Office.....562-985-8569  
Cell.....562-505-1297  
E-Mail .....andrea.ohta@csulb.edu  
Fax .....562-985-8197  
Press Row Phone.....562-985-4667  
Website .....longbeachstate.com

### COACHING STAFF

Head Coach .....Jody Wynn  
Record at LBSU (years) .....90-99 (6)  
Career Record (years).....90-99 (6)  
Assistant Coach.....Derek Wynn  
Assistant Coach .....Paul Reed  
Assistant Coach.....Kari LaPlante

### TEAM INFORMATION

2014-15 Record .....22-10  
2014-15 Conference.....9-7 (4th)  
2015 Postseason ...WNIT First Round  
Final Ranking (AP/WBCA) .....NR  
Letterwinners Returning/Lost.....7/4  
Starters Returning/Lost.....2/3

### KEY RETURNERS (2014-15 STATS)

Kim Anna, 5-5, Jr., G  
(9.0 ppg, 2.4 apg, 1.4 spg)  
Raven Benton, 5-10, Jr., G  
(12.2 ppg, 5.4 rpg, 0.8 apg)  
Dooley Chantel, 5-8, Sr., G  
(5.7 ppg, 4.2 rpg, 1.8 spg)

### SERIES INFORMATION

Overall.....LBSU leads 3-2  
In Boulder .....Tied 1-1  
In Long Beach .....LBSU leads 2-1

## NORTHERN ARIZONA

Wed., Dec. 9, 2015, 7 p.m.,  
Boulder, Colo.



Sue Darling



### SCHOOL INFORMATION

Location .....Flagstaff, Ariz.  
Founded.....1899  
Enrollment.....29,035  
Nickname .....Lumberjacks  
Colors.....Blue and Gold  
Conference.....Big Sky  
Arena (Capacity).....Walkup Skydome  
(3,300)  
President.....Dr. Rita Cheng  
Athletic Director .....Dr. Lisa Campos

### SPORTS INFORMATION

WBB SID .....Stayson Isobe  
Office.....928-523-6330  
Cell.....N/A  
E-Mail .....Stayson.Isobe@nau.edu  
Fax .....928-523-6793  
Press Row Phone.....N/A  
Website .....nauathletics.com

### COACHING STAFF

Head Coach .....Sue Darling  
Record at NAU (years) .....30-58 (3)  
Career Record (years).....42-128 (6)  
Associate Head Coach...Karlle Burris  
Assistant Coach.....Robyne Bostick  
Assistant Coach ..Jamie Rauchwarger

### TEAM INFORMATION

2014-15 Record .....13-17  
2014-15 Conference .....9-9 (t-4th)  
2015 Postseason.....DNP  
Final Ranking (AP/WBCA) .....NR  
Letterwinners Returning/Lost.....8/4  
Starters Returning/Lost.....3/2

### KEY RETURNERS (2014-15 STATS)

Rene Coggins, 5-8, Jr., G (6.7 ppg)  
Brittani Lusain, 5-8, Jr., G (10.2  
ppg, 6.0 rpg)  
Mariah Willadsen, 5-8, Sr., G (7.6  
ppg, 3.1 rpg)

### SERIES INFORMATION

Overall.....CU leads 14-2  
In Boulder .....CU leads 8-0  
In Flagstaff.....CU leads 6-0  
Neutral.....CU leads 1-0

## MISSOURI

Sat., Dec. 12, 2015, 1:30 p.m.,  
Boulder, Colo.



Robin Pingeton



### SCHOOL INFORMATION

Location.....Columbia, Mo.  
Founded.....1839  
Enrollment.....35,441  
Nickname.....Tigers  
Colors.....Old Gold and Black  
Conference.....Southeastern (SEC)  
Arena (Capacity) .....Mizzou Arena  
(15,061)  
Chancellor.....Dr. R. Bowen Loftin  
Athletic Director .....Mack Rhoades

### SPORTS INFORMATION

WBB SID.....Tyler Koonce  
Office.....573-884-9486  
Cell.....816-205-5400  
E-Mail .....kooncet@missouri.edu  
Fax .....N/A  
Press Row Phone..... 573-882-1442  
Website .....mutigers.com

### COACHING STAFF

Head Coach .....Robin Pingeton  
Record at UM (years) .....79-79 (6)  
Career Record (years)...414-236 (19)  
Assistant Coach .....Jenny Putnam  
Assistant Coach.....RaeShara Brown  
Assistant Coach .....Michael Porter

### TEAM INFORMATION

2014-15 Record .....19-14  
2014-15 Conference.....7-9 (7th)  
2015 Postseason.....DNP  
Final Ranking (AP/WBCA) .....NR  
Letterwinners Returning/Lost...11/2  
Starters Returning/Lost.....4/1

### KEY RETURNERS (2014-15 STATS)

Lindsey Cunningham, 6-0, Jr., G  
(3.4 ppg, 3.1 rpg, 2.8 apg)  
Jordan Frericks, 6-1, Jr., G/F  
(13.2 ppg, 9.9 rpg, 1.4 bpg)  
Sierra Micahelis, 5-10, Jr., G  
(10.4 ppg, 5.0 rpg, 2.4 apg)

### SERIES INFORMATION

Overall.....CU leads 42-27  
In Boulder.....CU leads 22-8  
In Columbia.....CU leads 16-15  
Neutral Site.....Tied 4-4



# 2015-16 OPPONENTS

## PRESBYTERIAN

Sat., Dec. 19, 2015, 3:30 p.m.,  
Boulder, Colo.



Ronny Fisher



### SCHOOL INFORMATION

Location .....Clinton, S.C.  
Founded.....1880  
Enrollment .....1,200  
Nickname .....Blue Hose  
Colors.....Garnet and Blue  
Conference.....Big South  
Arena (Capacity) ...Templeton Center  
(2,500)  
President .....Robert Emmett Staton  
Athletic Director .....Brian Reese

### SPORTS INFORMATION

WBB SID .....Tanner Ives  
Office.....864-833-8252  
Cell.....859-512-3570  
E-Mail .....tjives@presby.edu  
Fax .....864-833-8323  
Press Row Phone..... 864-833-8332  
Website.....GoBlueHose.com

### COACHING STAFF

Head Coach.....Ronny Fisher  
Record at PC (years) .....79-131 (7)  
Career Record (years) .....79-131 (7)  
Assistant Coach .....Lindsay Bowen  
Assistant Coach.....Dickran Parunak

### TEAM INFORMATION

2014-15 Record .....16-15  
2014-15 Conference .....10-10 (6th)  
2015 Postseason.....DNP  
Final Ranking (AP/WBCA) .....NR  
Letterwinners Returning/Lost.....6/3  
Starters Returning/Lost.....4/1

### KEY RETURNERS (2014-15 STATS)

Aianna Kelly, 5-8, Jr., G  
(6.5 ppg, 6.1 rpg, 2.2 apg)  
Janie Miles, 5-7, So., G  
(8.8 ppg, 1.9 rpg, 1.9 apg)  
Cortney Storey, 5-6, So., G  
(7.8 ppg, 2.4 rpg, 2.7 apg)

### SERIES INFORMATION

Overall.....First Meeting

## WYOMING

Mon., Dec. 21, 2015, 7 p.m.,  
Laramie, Wyo.



Joe Legerski



### SCHOOL INFORMATION

Location .....Laramie, Wyo.  
Founded.....1886  
Enrollment .....13,551  
Nickname.....Cowgirls  
Colors .....Brown and Gold  
Conference.....Mountain West  
Arena (Capacity) ...Arena Auditorium  
(11,612)  
President.....Dr. Richard McGinity  
Athletic Director.....Tom Burman

### SPORTS INFORMATION

WBB SID .....Amy Dambro  
Office.....307-766-2269  
Cell.....307-760-1736  
E-Mail .....montross@uwyo.edu  
Fax .....307-766-2346  
Press Row Phone..... 307-766-2222  
Website .....gowyo.com

### COACHING STAFF

Head Coach .....Joe Legerski  
Record at UW (years)....232-140 (12)  
Career Record (years)....232-140 (12)  
Associate Head CoachGerald  
Mattinson  
Assistant Coach.....Bojan Jankovic  
Assistant Coach.....Heather Ezell

### TEAM INFORMATION

2014-15 Record .....16-14  
2014-15 Conference.....10-8 (t-5th)  
2015 Postseason.....DNP  
Final Ranking (AP/WBCA) .....NR  
Letterwinners Returning/Lost.....8/5  
Starters Returning/Lost.....2/3

### KEY RETURNERS (2014-15 STATS)

Marquelle Dent, 5-7, Sr., G  
(17.7 ppg, 4.0 rpg, 6.0 apg, 2.2 spg)  
Jordan Kelley, 5-9, Sr., G  
(7.6 ppg, 7.1 rpg, 3.0 apg)

### SERIES INFORMATION

Overall.....CU leads 37-9  
In Boulder.....CU leads 22-2  
In Laramie .....CU leads 15-7

## ARIZONA

Sun., Jan. 17, 2016, 2 p.m.,  
Tucson, Ariz.



Niya Butts



LaBrittney Jones  
Jr., F

### SCHOOL INFORMATION

Location ..... Tucson, Ariz.  
Founded .....1885  
Enrollment .....40,200  
Nickname .....Wildcats  
Colors .....Cardinal and Navy  
Conference .....Pac-12  
Arena (Capacity).....McKale Center (14,545)  
President .....Dr. Ann Weaver Hart  
Athletic Director .....Greg Byrne

### SPORTS INFORMATION

Women's Basketball SID.....Daniel Berk  
Office .....520-621-1914  
Cell .....314-363-5842  
E-Mail .....dberk@arizona.edu  
Fax.....520-621-2681  
Press Row Phone .....520-621-5291  
Website.....ArizonaWildcats.com

### COACHING STAFF

Head Coach .....Niya Butts  
Record at UA (years) .....79-108 (7)  
Career Record (years) .....79-108 (7)  
Assistant Coach .....E.C. Hill  
Assistant Coach.....Sean LeBeauf  
Assistant Coach.....Calamity McEntire

### TEAM INFORMATION

2014-15 Record.....10-20  
2014-15 Conference.....3-15 (11th)  
2015 Postseason.....DNP  
Final Ranking (AP/WBCA) .....NR  
Letterwinners Returning/Lost .....9/3  
Starters Returning/Lost .....3/2

### KEY RETURNERS (2014-15 STATS)

Keyahndra Cannon, 5-9, Sr., G (5.5 ppg, 2.3 rpg, 1.4 apg)  
LaBrittney Jones, 6-1, Jr., F (9.0 ppg, 5.7 rpg, 0.4 apg)  
Malena Washington, 5-6, Jr., G (6.9 ppg, 2.1 rpg, 2.1 apg)

### SERIES INFORMATION

Overall .....CU leads 13-3  
In Boulder.....CU leads 8-1  
In Tucson .....CU Leads 5-2

### 2015-16 SCHEDULE

Nov. 10 .....EASTERN NEW MEXICO	Jan. 15 .....*UTAH
Nov. 14 .....at Toledo	Jan. 17 .....*COLORADO
Nov. 18 .....HOWARD	Jan. 22 .....*at Arizona State
Nov. 21 .....at San Diego	Jan. 24 .....*ARIZONA STATE
Nov. 23 .....KANSAS	Jan. 29 .....*at Oregon State
Nov. 27 .....at North Texas	Jan. 31 .....*at Oregon
Dec. 2 .....NEW MEXICO STATE	Feb. 5 .....*USC
Dec. 5 .....PACIFIC	Feb. 7 .....*UCLA
Dec. 10 .....LOUISIANA TECH	Feb. 12 .....*at Stanford
Dec. 19 .....% SMU	Feb. 14 .....*at California
Dec. 20 .....% Florida Gulf Coast	Feb. 19 .....*WASHINGTON
Dec. 21 .....% Gardner-Webb	Feb. 21 .....*WASHINGTON STATE
Dec. 29 .....GEORGE MASON	Feb. 26 .....*at UCLA
Jan. 2 .....*STANFORD	Feb. 28 .....*at USC
Jan. 4 .....*CALIFORNIA	March 3-6 .....Pac-12 Tournament
Jan. 8 .....*at Washington State	
Jan. 10 .....*at Washington	

% - Puerto Rico Classic (San Juan, P.R.)  
\* - Pac 12 Conference Game





# 2015-16 OPPONENTS

## ARIZONA STATE

Fri., Jan. 15, 2016, 11 a.m.,  
Tempe, Ariz.

### SCHOOL INFORMATION

Location ..... Tempe, Ariz.  
Founded ..... 1885  
Enrollment ..... 82,060  
Nickname ..... Sun Devils  
Colors ..... Maroon and Gold  
Conference ..... Pac-12  
Arena (Capacity) .... Wells Fargo Arena (10,734)  
President ..... Dr. Michael Crow  
Athletic Director ..... Ray Anderson

### SPORTS INFORMATION

Women's Basketball SID ..... Steve Rodriguez  
Office ..... 480-965-9780  
Cell ..... 480-254-2489  
E-Mail ..... steve.rodriguez@asu.edu  
Fax ..... 480-965-5408  
Press Row Phone ..... 480-965-7274  
Website ..... TheSunDevils.com

### COACHING STAFF

Head Coach ..... Charli Turner Thorne  
Record at ASU (years) ..... 354-213 (18)  
Career Record (years) ..... 394-243 (18)  
Associate Head Coach ..... Amanda Levens  
Associate Head Coach ..... Meg Sanders  
Assistant Coach ..... Jackie Moore

### TEAM INFORMATION

2014-15 Record ..... 29-6  
2014-15 Conference ..... 15-3 (2nd)  
2015 Postseason ..... NCAA Third Round  
Final Ranking (AP/WBCA) ..... 21/8  
Letterwinners Returning/Lost ..... 9/3  
Starters Returning/Lost ..... 4/1

### KEY RETURNERS (2014-15 STATS)

Sophie Brunner, 6-1, Jr., F (11.9 ppg, 7.6 rpg, 1.2 apg)  
Elisha Davis, 5-3, Sr., G (7.5 ppg, 2.2 rpg, 4.5 apg)  
Katie Hempen, 5-9, R-Sr., G (12.0 ppg, 2.7 rpg, 2.4 apg)

### SERIES INFORMATION

Overall ..... CU leads 11-6  
In Boulder ..... CU leads 6-3  
In Tempe ..... CU leads 4-3  
Neutral ..... CU leads 1-0

### 2015-16 SCHEDULE

Nov. 15 ..... KENTUCKY	Jan. 22 ..... *ARIZONA
Nov. 21 ..... at SMU	Jan. 24 ..... *at Arizona
Nov. 27 ..... #South Carolina	Jan. 29 ..... *at Oregon
Nov. 28 ..... #Hawai'i	Feb. 1 ..... *at Oregon State
Nov. 29 ..... #CSU Bakersfield	Feb. 5 ..... *UCLA
Dec. 5 ..... ^VIRGINIA COMMONWEALTH	Feb. 7 ..... *USC
Dec. 6 ..... ^COLUMBIA/TOLEDO	Feb. 12 ..... *at California
Dec. 12 ..... at Syracuse	Feb. 14 ..... *at Stanford
Dec. 14 ..... at Hartford	Feb. 19 ..... *WASHINGTON STATE
Dec. 19 ..... MARQUETTE	Feb. 21 ..... *WASHINGTON
Dec. 21 ..... FLORIDA STATE	Feb. 26 ..... *as USC
Dec. 28 ..... at CSUN	Feb. 28 ..... *at UCLA
Jan. 2 ..... *CALIFORNIA	March 3-6 ..... Pac-12 Tournament
Jan. 4 ..... *STANFORD	
Jan. 8 ..... *at Washington	
Jan. 10 ..... *at Washington State	
Jan. 15 ..... *COLORADO	
Jan. 17 ..... *UTAH	

\*- Pac-12 Conference game  
#- Rainbow Wahine Showdown (Honolulu, Hawai'i)  
^ - ASU Classic (Tempe, Ariz.)



Charli Turner Thorne

Elisha Davis  
Sr., G



## CALIFORNIA

Fri., Jan. 8, 2016, 8 p.m.,  
Berkeley, Calif.  
Sun., Feb. 21, 2016, 12 p.m.,  
Boulder, Colo.

### SCHOOL INFORMATION

Location ..... Berkeley, Calif.  
Founded ..... 1868  
Enrollment ..... 37,581  
Nickname ..... Golden Bears  
Colors ..... Blue and Gold  
Conference ..... Pac-12  
Arena (Capacity) ..... Haas Pavilion (11,877)  
Chancellor ..... Nicholas Dirks  
Athletic Director ..... H. Michael Williams

### SPORTS INFORMATION

Women's Basketball SID ..... Mara Rudolph  
Office ..... 510-643-5846  
Cell ..... 510-384-6574  
E-Mail ..... marar@berkeley.edu  
Fax ..... 510-643-7778  
Press Row Phone ..... 510-642-3098  
Website ..... CalBears.com

### COACHING STAFF

Head Coach ..... Lindsay Gottlieb  
Record at Cal (years) ..... 103-34 (4)  
Career Record (years) ..... 159-73 (7)  
Associate Head Coach ..... Charmin Smith  
Assistant Coach ..... Kai Felton  
Assistant Coach ..... Jeff Cammon

### TEAM INFORMATION

2014-15 Record ..... 24-10  
2014-15 Conference ..... 13-5 (t-3rd)  
2015 Postseason ..... NCAA Second Round  
Final Ranking (AP/WBCA) ..... 24/RV  
Letterwinners Returning/Lost ..... 5/5  
Starters Returning/Lost ..... 2/3

### KEY RETURNERS (2014-15 STATS)

Mikayla Cowling, 6-2, So., F/G (10.0 ppg, 5.0 rpg, 1.9 apg)  
Gabby Green, 6-2, So., G (6.7 ppg, 5.7 rpg, 3.2 apg)  
Courtney Range, 6-3, Jr., G (8.7 ppg, 5.4 rpg, 1.1 apg)

### SERIES INFORMATION

Overall ..... Cal leads 8-5  
In Boulder ..... Tied 3-3  
In Berkeley ..... Cal leads 3-2  
Neutral ..... Cal leads 2-0

### 2015-16 SCHEDULE

Nov. 13 ..... at Austin Peay State	Jan. 22 ..... *at UCLA
Nov. 15 ..... at Louisville	Jan. 24 ..... *at USC
Nov. 20 ..... UC RIVERSIDE	Jan. 29 ..... *WASHINGTON STATE
Nov. 22 ..... CAL POLY	Jan. 31 ..... *WASHINGTON
Nov. 27 ..... ^vs. Texas A&M	Feb. 2 ..... *at Stanford
Nov. 28 ..... ^vs. Villanova	Feb. 5 ..... *STANFORD
Dec. 5 ..... #ST. MARY'S	Feb. 12 ..... *ARIZONA STATE
Dec. 6 ..... #SACRAMENTO STATE/VILLANOVA	Feb. 14 ..... *ARIZONA
Dec. 12 ..... NEBRASKA	Feb. 19 ..... *at Utah
Dec. 21 ..... UCLA	Feb. 21 ..... *at Colorado
Dec. 30 ..... CAL STATE NORTHRIDGE	Feb. 26 ..... *OREGON
Jan. 2 ..... *at Arizona State	Feb. 28 ..... *OREGON STATE
Jan. 4 ..... *at Arizona	March 3-6 ..... Pac-12 Tournament
Jan. 8 ..... *COLORADO	
Jan. 10 ..... *UTAH	
Jan. 15 ..... *at Oregon State	
Jan. 17 ..... *at Oregon	

\*- Pac 12 Conference Game  
^ - South Point Shootout (Las Vegas, Nev.)  
# - Cal Tournament (Berkeley, Calif.)



Lindsay Gottlieb

Mikayla Cowling  
So., F





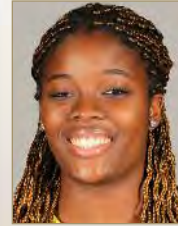
# 2015-16 OPPONENTS

## OREGON

Fri., Jan. 22, 2016, 6 p.m.,  
Boulder, Colo.  
Sun., Feb. 14, 2016, 5 p.m.,  
Eugene, Ore.



Kelly Graves



Jillian Alleyne  
Sr., F



### SCHOOL INFORMATION

Location .....Eugene, Ore.  
Founded .....1876  
Enrollment .....24,181  
Nickname.....Ducks  
Colors.....Green and Yellow  
Conference .....Pac-12  
Arena (Capacity) .....Matthew Knight Arena  
(12,369)  
President.....Michael Schill  
Athletic Director .....Rob Mullens

### SPORTS INFORMATION

WBB SID .....Joe Waltasti  
Office .....541-346-7332  
Cell .....916-889-6643  
E-Mail .....waltasti@uoregon.edu  
Fax.....541-346-5499  
Press Row Phone .....541-346-4497  
Website .....GoDucks.com

### COACHING STAFF

Head Coach .....Kelly Graves  
Record at UO (years).....13-17 (1)  
Career Record (years).....440-219 (21)  
Assistant Coach.....Jodie Berry  
Assistant Coach .....Mark Campebl  
Assistant Coach .....Nicole Powell

### TEAM INFORMATION

2014-15 Record .....13-17  
2014-15 Conference .....6-12 (t-9th)  
2015 Postseason .....N/A  
Final Ranking (AP/WBCA).....NR  
Letterwinners Returning/Lost .....5/8  
Starters Returning/Lost .....3/2

### KEY RETURNERS (2014-15 STATS)

Jillian Alleyne, 6-3, Sr., F (18.4 ppg, 15.2 rpg, 1.4 bpg)  
Lexi Bando, 5-9, So., G (10.4 ppg, 2.6 rpg, 2.0 apg)  
Lexi Petersen, 5-11, Sr., G (11.1 ppg, 3.7 rpg, 3.7 apg)

### SERIES INFORMATION

Overall .....UO Leads 10-7  
In Boulder.....UO Leads 4-3  
In Eugene .....UO Leads 4-2  
Neutral .....Tied 2-2

### 2015-16 SCHEDULE

Nov. 15 .....at North Carolina	Jan. 17.....*CALIFORNIA
Nov. 19 .....HAMPTON	Jan. 22 .....*at Colorado
Nov. 22.....UC SANTRA BARBARA	Jan. 24.....*at Utah
Nov. 24.....CLEMSON	Jan. 29.....*ARIZONA STATE
Nov. 28.....NORTH DAKOTA	Jan. 31.....*ARIZONA
Nov. 30.....SAN JOSE STATE	Feb. 5.....*at Washington State
Dec. 5.....UTAH VALLEY	Feb. 7.....*at Washington
Dec. 12.....PORTLAND	Feb. 12.....*UTAH
Dec. 15.....UC RIVERSIDE	Feb. 14.....*COLORADO
Dec. 17.....PORTLAND STATE	Feb. 19.....*UCLA
Dec. 28.....SEATTLE U	Feb. 21.....*USC
Jan. 2.....*at UCLA	Feb. 26.....*at California
Jan. 4.....*at USC	Feb. 28.....*at Stanford
Jan. 8.....*at Oregon State	March 3-6.....Pac-12 Tournament
Jan. 10.....*OREGON STATE	
Jan. 15.....*STANFORD	

\*- Pac-12 Conference Game

## OREGON STATE

Sun., Jan. 24, 2016, 3 p.m.,  
Boulder, Colo.  
Fri., Feb. 12, 2016, 8:30 p.m.,  
Corvallis, Ore.



Scott Rueck



Sydney Wiese  
Jr., G



### SCHOOL INFORMATION

Location .....Corvallis, Ore.  
Founded .....1868  
Enrollment .....30,058  
Nickname.....Beavers  
Colors.....Orange and Black  
Conference .....Pac-12  
Arena (Capacity).....Gill Coliseum (9,604)  
President.....Dr. Edward Ray  
Athletic Director .....Todd Stansbury

### SPORTS INFORMATION

Women's Basketball SID.....Trevor Cramer  
Office .....541-737-3720  
Cell .....N/A  
E-Mail .....trevor.cramer@oregonstate.edu  
Fax.....541-737-3072  
Press Row Phone .....541-737-3020  
Website .....osubeavers.com

### COACHING STAFF

Head Coach .....Scott Rueck  
Record at OSU (years) .....90-71 (4)  
Career Record (years).....378-159 (18)  
Assistant Coach.....Jonas Chatterton  
Assistant Coach .....Eric Ely  
Assistant Coach .....Mandy Close

### TEAM INFORMATION

2014-15 Record .....27-5  
2014-15 Conference .....16-2 (1st)  
2015 Postseason .....NCAA Second Round  
Final Ranking (AP/WBCA).....13  
Letterwinners Returning/Lost .....9/1  
Starters Returning/Lost .....4/1

### KEY RETURNERS (2014-15 STATS)

Ruth Hamblin, 6-6, Sr., C (12.9 ppg, 8.6 rpg, 3.8 bpg)  
Jamie Weisner, 5-10, Sr., G (13.7 ppg, 6.2 rpg, 1.9 apg)  
Sydney Wiese, 6-0, Jr., G (12.7 ppg, 2.5 rpg, 5.5 apg)

### SERIES INFORMATION

Overall.....CU leads 6-3  
In Boulder.....CU leads 4-1  
In Corvallis.....OSU leads 2-1  
Neutral .....CU leads 1-0

### 2015-16 SCHEDULE

Nov. 13.....LONGWOOD	Jan. 22.....*at Utah
Nov. 16.....at Portland	Jan. 24.....*at Colorado
Nov. 22.....UC RIVERSIDE	Jan. 29.....*ARIZONA
Nov. 27.....# vs. HOFSTRA	Feb. 1.....*ARIZONA STATE
Nov. 28.....#vs. ARKANSAS	Feb. 5.....*at Washington
Dec. 3.....at Marquette	Feb. 7.....*at Washington State
Dec. 12.....IDAHO	Feb. 12.....*COLORADO
Dec. 15.....CSU BAKERSFIELD	Feb. 14.....*UTAH
Dec. 19.....TENNESSEE	Feb. 19.....*USC
Dec. 21.....CAL POLY	Feb. 21.....*UCLA
Dec. 28.....at Notre Dame	Feb. 26.....*at Stanford
Jan. 2.....*at USC	Feb. 28.....*at California
Jan. 4.....*at UCLA	March 3-6.....Pac-12 Tournament
Jan. 8.....*OREGON	
Jan. 10.....*at Oregon	
Jan. 15.....*CALIFORNIA	
Jan. 17.....*STANFORD	

\*- Pac-12 Conference Game  
#- San Juan Tournament (San Juan, P.R.)



# 2015-16 OPPONENTS

## STANFORD

Sun., Jan. 10, 2016, 1 p.m.,  
Stanford, Calif.

Fri., Feb. 19, 2016, 7 p.m.,  
Boulder, Colo.

### SCHOOL INFORMATION

Location .....Stanford, Calif.  
Founded .....1891  
Enrollment .....16,136  
Nickname .....Cardinal  
Colors .....Cardinal and White  
Conference .....Pac-12  
Arena (Capacity).....Maples Pavillion (7,233)  
President .....John L. Hennessy  
Athletic Director .....Bernard Muir

### SPORTS INFORMATION

Women's Basketball SID.....John Cantalupi  
Office .....650-924-8304  
Cell .....650-924-8304  
E-Mail.....johncan@stanford.edu  
Press Row Phone .....650-723-4418  
Website.....gostanford.com

### COACHING STAFF

Head Coach.....Tara VanDerveer  
Record at SU (years) .....801-166 (28)  
Career Record (years) .....953-217 (35)  
Associate Head Coach .....Amy Tucker  
Assistant Coach .....Tempie Brown  
Assistant Coach .....Katie Paye

### TEAM INFORMATION

2014-15 Record .....26-10  
2014-15 Conference .....13-5 (3rd)  
2015 Postseason .....NCAA Sweet Sixteen  
Final Ranking (AP/WBCA) .....14/14  
Letterwinners Returning/Lost .....9/6  
Starters Returning/Lost .....3/2

### KEY RETURNERS (2014-15 STATS)

Briana Roberson, 5-7, Jr., G (6.4 ppg, 1.7 rpg, 1.0 apg)  
Karlle Samuelson, 6-0, Jr., G (6.4 ppg, 2.4 rpg, 1.0 apg)  
Lili Thompson, 5-7, Jr., G (13.3 ppg, 3.0 rpg, 2.3 apg)

### SERIES INFORMATION

Overall .....SU Leads 13-4  
In Boulder.....SU leads 4-2  
In Stanford.....SU leads 7-0  
Neutral .....Tied 2-2

### 2015-16 SCHEDULE

Nov. 13 .....at UC Davis	Jan. 17 .....*at Oregon State
Nov. 15 .....at Gonzaga	Jan. 22 .....*at USC
Nov. 21 .....GEORGE WASHINGTON	Jan. 24 .....*at UCLA
Nov. 23 .....SANTA CLARA	Jan. 29 .....*WASHINGTON
Nov. 27 .....#vs. Missouri State	Jan. 31 .....*WASHINGTON STATE
Nov. 28 .....#vs. Dayton/Maine	Feb. 2 .....*CALIFORNIA
Nov. 29 .....#vs. TBD	Feb. 5 .....*at California
Dec. 13 .....at Texas	Feb. 12 .....*ARIZONA
Dec. 16 .....TENNESSEE	Feb. 14 .....*ARIZONA STATE
Dec. 19 .....CORNELL	Feb. 19 .....*at Colorado
Dec. 22 .....CSU BAKERSFIELD	Feb. 21 .....*at Utah
Dec. 28 .....*CHATTANOOGA	Feb. 26 .....*OREGON STATE
Jan. 2 .....* at Arizona	Feb. 28 .....*OREGON
Jan. 4 .....* at Arizona State	March 3-6.....Pac-12 Tournament
Jan. 8 .....* UTAH	*- Pac-12 Conference Game
Jan. 10 .....* COLORADO	#- Gulf Coast Showcase (Esterro, Fla.)
Jan. 15 .....* at Oregon	



Tara VanDerveer



Lili Thompson Jr., G



## USC

Sun., Jan. 31, 2016, 7 p.m.,  
Boulder, Colo.

### SCHOOL INFORMATION

Location.....Los Angeles, Calif.  
Founded .....1880  
Enrollment .....43,000  
Nickname .....Trojans/Women of Troy  
Colors .....Cardinal & Gold  
Conference .....Pac-12  
Arena (Capacity) .....Galen Center (10,258)  
President ..... C.L. Max Nikias  
Athletic Director .....Pat Haden

### SPORTS INFORMATION

Women's Basketball SID.....Darcy Couch  
Office .....213-740-3808  
Cell .....213-725-3447  
E-Mail.....dcouch@usc.edu  
Fax.....213-740-7584  
Press Row Phone .....213-740-3900  
Website .....usctrojans.com

### COACHING STAFF

Head Coach .....Cynthia Cooper-Dyke  
Record at USC (years).....37-28 (2)  
Career Record (years) .....187-134 (10)  
Associate Head Coach.....Beth Burns  
Assistant Coach .....Jualeah Woods  
Assistant Coach .....Taja Edwards

### TEAM INFORMATION

2014-15 Record .....15-15  
2013-14 Conference .....7-11 (t-7th)  
2014 Postseason .....DNP  
Final Ranking (AP/WBCA) .....NR  
Letterwinners Returning/Lost .....6/5  
Starters Returning/Lost .....3/2

### KEY RETURNERS (2014-15 STATS)

Jordan Adams, 6-1, R-Jr., G (7.3 ppg, 5.2 rpg, 3.8 apg)  
Brianna Barrett, 5-7, Sr., G (9.6 ppg, 3.7 rpg 3.6 apg)  
Courtney Jaco, 5-8, Jr., G (7.0 ppg, 0.9 rpg, 1.5 apg)

### SERIES INFORMATION

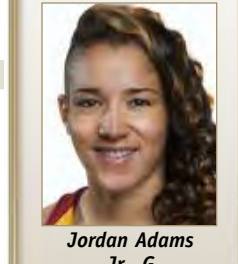
Overall .....USC leads 8-4  
In Boulder .....USC leads 4-2  
In Los Angeles .....USC leads 4-2

### 2015-16 SCHEDULE

Nov. 13 .....HOPE INTERNATIONAL	Jan. 22.....*STANFORD
Nov. 16 .....SANTA CLARA	Jan. 24 .....*CALIFORNIA
Nov. 22 .....#vs. Grand Canyon	Jan. 29 .....*at Utah
Nov. 23 .....#vs. West Virginia	Jan. 31 .....*at Colorado
Nov. 24 .....#vs. Gonzaga	Feb. 5 .....*at Arizona
Nov. 29 .....at Iona	Feb. 7 .....*at Arizona State
Dec. 4 .....SOUTHERN UTAH	Feb. 12 .....*WASHINGTON
Dec. 6 .....UNLV	Feb. 14 .....*WASHINGTON STATE
Dec. 13 .....LONG BEACH STATE	Feb. 19 .....*at Oregon State
Dec. 18 .....%FLORIDA A&M	Feb. 21 .....*at Oregon
Dec. 20 .....%TBD	Feb. 26 .....*ARIZONA STATE
Dec. 28 .....UC IRVINE	Feb. 28 .....*ARIZONA
Dec. 30 .....*at UCLA	March 3-6 .....Pac-12 Tournament
Jan. 2 .....*OREGON STATE	
Jan. 4 .....*OREGON	*- Pac 12 Conference Game
Jan. 10 .....*UCLA	#- Naismith Memorial Hall of Fame
Jan. 15 .....*at Washington State	Challenge (Spokane, Wash.)
Jan. 17 .....*at Washington	%- Women of Troy Classic (Los Angeles, Calif.)



Cynthia Cooper



Jordan Adams Jr., G





# 2015-16 OPPONENTS

## UCLA

Fri., Jan. 29, 2016, 6 p.m.,  
Boulder, Colo.

### SCHOOL INFORMATION

Location.....Los Angeles, Calif.  
Founded.....1919  
Enrollment.....42,163  
Nickname.....Bruins  
Colors.....Blue & Gold  
Conference.....Pac-12  
Arena (Capacity).....Pauley Pavilion (13,800)  
Chancellor.....Dr. Gene Block  
Athletic Director.....Dan Guerrero



Cori Close



Nirra Fields  
Sr., G

### SPORTS INFORMATION

WBB First Contact.....Ryan Finney  
Office.....310-206-4701  
Cell.....424-832-0676  
E-Mail.....rfinney@athletics.ucla.edu  
Fax.....310-825-8664  
Press Row Phone.....310-825-1899  
Website.....uclabruins.com

### COACHING STAFF

Head Coach.....Cori Close  
Record at UCLA (years).....72-60 (4)  
Career Record (years).....72-60 (4)  
Assistant Coach.....Jenny Huth  
Assistant Coach.....Tony Newnan  
Assistant Coach.....Shannon Perry



### TEAM INFORMATION

2013-14 Record.....19-18  
2013-14 Conference.....8-10 (6th)  
2014 Postseason.....WNIT Champion  
Final Ranking (AP/WBCA).....NR  
Letterwinners Returning/Lost.....10/4  
Starters Returning/Lost.....4/1

### KEY RETURNERS (2014-15 STATS)

Jordin Canada, 5-6, So., G (11.8 ppg, 3.4 rpg, 4.4 apg)  
Nirra Fields, 5-9, Sr., G (15.0 ppg, 5.4 rpg, 1.8 apg)  
Kari Korver, 5-9, Jr., G (10.1 ppg, 3.7 rpg, 1.5 apg)

### SERIES INFORMATION

Overall.....UCLA leads 6-5  
In Boulder.....UCLA leads 2-3  
In Los Angeles.....UCLA leads 2-3  
Neutral Site.....CU leads 1-0

### 2015-16 SCHEDULE

Nov. 13.....ST. JOHN'S	Jan. 17.....*at Washington State
Nov. 20.....JAMES MADISON	Jan. 22.....*CALIFORNIA
Nov. 22.....SOUTH CAROLINA	Jan. 24.....*STANFORD
Nov. 27.....%vs. Louisiana Tech	Jan. 29.....*at Colorado
Nov. 28.....%vs. Denver/Notre Dame	Jan. 31.....*at Utah
Dec. 5.....CSU BAKERSFIELD	Feb. 5.....*at Arizona State
Dec. 13.....at Michigan	Feb. 7.....*at Arizona
Dec. 16.....UC IRVINE	Feb. 12.....*WASHINGTON STATE
Dec. 18.....at Sacramento State	Feb. 14.....*WASHINGTON
Dec. 21.....at California	Feb. 19.....*at Oregon
Dec. 28.....at UC Riverside	Feb. 21.....*at Oregon State
Dec. 30.....*USC	Feb. 26.....*ARIZONA
Jan. 2.....*OREGON	Feb. 28.....*ARIZONA STATE
Jan. 4.....*OREGON STATE	March 3-6.....Pac-12 Tournament
Jan. 10.....*at USC	
Jan. 15.....*at Washington	

\*- Pac-12 Conference Game  
%- Junkanoo Jam (Freeport, Bahamas)

## UTAH

Thurs., Feb. 4, 2016, 6 p.m.,  
Salt Lake City, Utah

Sun., Feb. 7, 2016, 12 p.m.,  
Boulder, Colo.

### SCHOOL INFORMATION

Location.....Salt Lake City, Utah  
Founded.....1850  
Enrollment.....32,007  
Nickname.....Utes  
Colors.....Crimson and White  
Conference.....Pac-12  
Arena (Capacity).....Jon M. Huntsman Center (15,000)  
President.....Dr. David W. Pershing  
Athletic Director.....Dr. Chris Hill



Lynne Roberts



Danielle Rodriguez  
Sr., G

### SPORTS INFORMATION

Women's Basketball SID.....Mike DeVine  
Office.....801-581-8997  
Cell.....801-580-4502  
E-Mail.....mdevine@huntsman.utah.edu  
Fax.....801-581-4358  
Press Row Phone.....N/A  
Website.....utahutes.com

### COACHING STAFF

Head Coach.....Lynne Roberts  
Record at Utah (years).....0-0  
Career Record (years).....221-175  
Assistant Coach.....Gavin Peterson  
Assistant Coach.....Danyelle Snelgro  
Assistant Coach.....Wesley Brookes



### TEAM INFORMATION

2014-15 Record.....9-21  
2014-15 Conference.....3-15 (12th)  
2015 Postseason.....DNP  
Final Ranking (AP/USA Today).....NR  
Letterwinners Returning/Lost.....10/4  
Starters Returning/Lost.....6/2

### KEY RETURNERS (2014-15 STATS)

Joeseta Fatuesi, 6-4, So., F (6.5 ppg, 6.4 rpg, 0.6 apg)  
Danielle Rodriguez, 5-10, Sr., G (8.6 ppg, 4.4 rpg, 3.6 apg)  
Tanaeya Bocclair, 6-0, So., W (9.0 ppg, 3.7 rpg, 0.8 apg)

### SERIES INFORMATION

Overall.....CU leads 14-12  
In Boulder.....CU leads 8-3  
In Salt Lake City.....Utah leads 7-3  
Neutral.....CU leads 3-1

### 2015-16 SCHEDULE

Nov. 6.....FORT LEWIS	Jan. 17.....*at Arizona State
Nov. 13.....SOUTH DAKOTA	Jan. 22.....*OREGON STATE
Nov. 17.....LAMAR	Jan. 24.....*OREGON
Nov. 20.....GEORGE MASON	Jan. 29.....*USC
Nov. 26.....%vs. Oklahoma	Jan. 31.....*UCLA
Nov. 27.....%vs. Boston College	Feb. 4.....*COLORADO
Dec. 3.....CAL STATE NORTHBRIDGE	Feb. 7.....*at Colorado
Dec. 9.....CREIGHTON	Feb. 12.....*at Oregon
Dec. 12.....at BYU	Feb. 14.....*at Oregon State
Dec. 19.....FRESNO STATE	Feb. 19.....*CALIFORNIA
Dec. 22.....at Utah State	Feb. 21.....*STANFORD
Dec. 29.....UC DAVIS	Feb. 25.....*at Washington
Jan. 2.....*WASHINGTON STATE	Feb. 27.....*at Washington State
Jan. 4.....*WASHINGTON	March 3-6.....Pac-12 Tournament
Jan. 8.....*at Stanford	
Jan. 10.....*at California	
Jan. 15.....*at Arizona	

\*- Pac 12 Conference Game  
%- Junkanoo Jam (Freeport, Bahamas)



# 2015-16 OPPONENTS

## WASHINGTON

Sat., Jan. 2, 2016, 1 p.m.,  
Boulder, Colo.

Sat., Feb. 27, 2016, 2 p.m.,  
Seattle, Wash.

### SCHOOL INFORMATION

Location .....Seattle, Wash.  
Founded .....1861  
Enrollment .....42,000  
Nickname .....Huskies  
Colors.....Purple and Gold  
Conference .....Pac-12  
Arena (Capacity) .....Alaska Airlines Arena  
(10,000)  
President .....Michael K. Young  
Athletic Director .....Scott Woodward

### SPORTS INFORMATION

Women's Basketball SID .....Ricky Brackett  
Office .....206-897-1743  
Cell .....206-790-6368  
E-Mail .....rbrack@uw.edu  
Fax.....206-543-5000  
Press Row Phone .....206-543-2230/2231  
Website .....GoHuskies.com

### COACHING STAFF

Head Coach.....Mike Neighbors  
Record at UW .....43-24 (2)  
Career Record .....43-24 (2)  
Assistant Coach .....Adia Barnes  
Assistant Coach .....Fred Castro  
Assistant Coach .....Morgan Valley

### TEAM INFORMATION

2014-15 Record .....23-10  
2014-15 Conference.....11-7 (5th)  
2015 Postseason.....NCAA First Round  
Final Ranking (AP/WBCA) .....NR  
Letterwinners Returning/Lost.....10/2  
Starters Returning/Lost .....3/2

### KEY RETURNERS (2014-15 STATS)

Kelsey Plum, 5-9, Jr., G (22.6 ppg, 3.7 rpg, 3.3 apg)  
Talia Walton, 6-2, Sr., F (13.0 ppg, 5.8 rpg, .461 FG%)  
Chantel Osahor, 6-2, Jr., F/C (5.1 ppg, 6.4 rpg, .424 FG%)

### SERIES INFORMATION

Overall.....CU leads 8-7  
In Boulder ..... Series tied 3-3  
In Seattle.....UW leads 4-2  
Neutral .....CU leads 3-0

### 2015-16 SCHEDULE

Nov. 2 .....CONCORDIA	Jan. 15 .....*UCLA
Nov. 8 .....WARNER PACIFIC	Jan. 17 .....*USC
Nov. 14 .....SANTA CLARA	Jan. 23 .....*WASHINGTON STATE
Nov. 18 .....SEATTLE	Jan. 29 .....*at Stanford
Nov. 20 .....at Fresno State	Jan. 31 .....*at California
Nov. 23 .....SAN DIEGO STATE	Feb. 5 .....*OREGON STATE
Nov. 27 .....% vs. Syracuse	Feb. 7 .....*OREGON
Nov. 28 .....% vs. Texas Tech	Feb. 12 .....*at USC
Dec. 2 .....PORTLAND	Feb. 14 .....*at UCLA
Dec. 6 .....OKLAHOMA	Feb. 19 .....*at Arizona
Dec. 12 .....at South Dakota	Feb. 21 .....*at Arizona State
Dec. 18 .....UC RIVERSIDE	Feb. 25 .....*UTAH
Dec. 21 .....WEBER STATE	Feb. 27 .....*COLORADO
Dec. 29 .....*at Washington State	March 3-6.....Pac-12 Tournament
Jan. 2 .....*at Colorado	
Jan. 4 .....*at Utah	
Jan. 8 .....*ARIZONA STATE	
Jan. 10 .....*ARIZONA	

\*- Pac 12 Conference Game  
%- South Point Shootout (Las Vegas, Nev.)



Mike Neighbors



Kelsey Plum  
Jr., G



## WASHINGTON STATE

Mon., Jan. 4, 2016, 8 p.m.,  
Boulder, Colo.

Thurs., Feb. 25, 2016, 8 p.m.,  
Pullman, Wash.

### SCHOOL INFORMATION

Location .....Pullman, Wash.  
Founded .....1890  
Enrollment .....19,756  
Nickname .....Cougars  
Colors .....Crimson & Gray  
Conference .....Pac-12  
Arena (Capacity) .....Beasley Coliseum (11,671)  
Interim President .....Dan Bernardo  
Athletic Director .....Bill Moos

### SPORTS INFORMATION

Women's Basketball SID .....Jim Crawford  
Office .....509-335-0265  
Cell .....509-715-9788  
E-Mail .....j.crawford@wsu.edu  
Fax.....509-335-0267  
Press Row Phone .....509-335-4940  
Website.....wsucougars.com

### COACHING STAFF

Head Coach .....June Daugherty  
Record at WSU (years) .....90-161 (8)  
Career Record (years) .....404-375 (26)  
Associate Head Coach.....Mike Daugherty  
Assistant Coach .....Ashley Gill  
Assistant Coach .....Rod Jensen

### TEAM INFORMATION

2014-15 Record .....17-15  
2014-15 Conference.....7-11 (7th)  
2015 Postseason.....WNIT First Round  
Final Ranking (AP/WBCA) .....NR  
Letterwinners Returning/Lost .....9/3  
Starters Returning/Lost .....2/3

### KEY RETURNERS (2014-15 STATS)

Mariah Cooks, 6-1, Sr., F (7.5 ppg, 5.3 rpg, .738 FT%)  
Taylor Edmonson, 5-11, Sr., G (5.1 ppg, 2.0 rpg, .773 FT%)  
Dawnielle Awa, 5-9, Sr., G (4.7 ppg, 1.8 rpg, 2.5 apg)

### SERIES INFORMATION

Overall.....Tied 4-4  
In Boulder.....CU leads 3-1  
In Pullman.....WSU leads 3-1

### 2015-16 SCHEDULE

Nov. 8 .....LEWIS-CLARK STATE	Jan. 17 .....*UCLA
Nov. 13 .....UC SANTA BARBARA	Jan. 23 .....*at Washington
Nov. 16 .....HAMPTON	Jan. 29 .....*at California
Nov. 20 .....#vs. Nevada	Jan. 31 .....*at Stanford
Nov. 22 .....#vs. Hawaii	Feb. 5 .....*OREGON
Nov. 27 .....SAN JOSE STATE	Feb. 7 .....*OREGON STATE
Nov. 30 .....at Oklahoma State	Feb. 12 .....*at UCLA
Dec. 3 .....at Boise State	Feb. 14 .....*at USC
Dec. 6 .....at San Diego	Feb. 19 .....*ARIZONA STATE
Dec. 8 .....GONZAGA	Feb. 21 .....*ARIZONA
Dec. 12 .....at St. Mary's (California)	Feb. 25 .....*COLORADO
Dec. 20 .....at Kansas	Feb. 27 .....*UTAH
Dec. 29 .....*WASHINGTON	March 3-6.....Pac-12 Tournament
Jan. 2 .....*at Utah	
Jan. 4 .....*at Colorado	
Jan. 8 .....*ARIZONA	
Jan. 10 .....*ARIZONA STATE	
Jan. 15 .....*USC	

\*- Pac-12 Conference Game  
#- Rainbow Wahine Classic (Honolulu, Hawai'i)



June Daugherty



Mariah Cooks  
Sr., F



## 2015-16 PAC-12 COMPOSITE SCHEDULE



## NOVEMBER

## Friday, November 13

Hope International at USC	1 p.m.
South Dakota at Utah	4:45 p.m.
St. John's at UCLA	6 p.m.
California at Austin Peay State	6 p.m.
Longwood at Oregon State	8 p.m.
UC Davis at Stanford	8:30 p.m.
UC Santa Barbara at Washington State	8:30 p.m.

## Saturday, November 14

Arizona vs. Toledo	10 a.m.
Loyola Marymount at Colorado	2 p.m.
Santa Clara at Washington	3 p.m.

## Sunday, November 15

Oregon at North Carolina	10:30 a.m.
California at Louisville	12 p.m.
Stanford at Gonzaga	2 p.m.
Kentucky at Arizona State	3:30 p.m.

## Monday, November 16

Santa Clara at USC	5 p.m.
Hampton at Washington State	8 p.m.
Oregon State at Portland	8 p.m.

## Tuesday, November 17

Lamar at Utah	7 p.m.
---------------	--------

## Wednesday, November 18

Howard at Arizona	7 p.m.
Seattle at Washington	8 p.m.

## Thursday, November 19

Hampton at Oregon	7 p.m.
Northern Colorado at Colorado	7 p.m.

## Friday, November 20

UC Riverside at California	12:30 p.m.
Washington State vs. Nevada	7:30 p.m.
<i>Rainbow Wahine Classic, Honolulu, Hawai'i</i>	
George Mason at Utah	7 p.m.
James Madison at UCLA	8 p.m.
Washington at Fresno State	8 p.m.

## Saturday, November 21

Arizona State at SMU	TBA
George Washington at Stanford	TBA
Arizona at San Diego	6 p.m.

## Sunday, November 22

Colorado at Kentucky	12 p.m.
UC Santa Barbara at Oregon	1 p.m.
South Carolina at UCLA	2 p.m.
Cal Poly at California	3 p.m.
UC Riverside at Oregon State	3 p.m.
Washington State at Hawai'i	6 p.m.
<i>Rainbow Wahine Classic, Honolulu, Hawai'i</i>	
USC vs. Grand Canyon	5 p.m.
<i>Naismith Memorial Hall of Fame Challenge, Spokane, Wash.</i>	

## Monday, November 23

Kansas at Arizona	11 a.m.
San Diego State at Washington	8 p.m.
Santa Clara at Stanford	8 p.m.
USC vs. West Virginia	9 p.m.
<i>Naismith Memorial Hall of Fame Challenge, Spokane, Wash.</i>	

## Tuesday, November 24

USC vs. Gonzaga	7 p.m.
<i>Naismith Memorial Hall of Fame Challenge, Spokane, Wash.</i>	
Clemson at Oregon	7 p.m.

## Thursday, November 26

Utah vs. Oklahoma	2:15 p.m.
<i>Junkanoo Jam, Freeport, Bahamas</i>	

## Friday, November 27

Massachusetts at Colorado	7:30 p.m.
<i>Omni Hotels Classic, Boulder, Colo.</i>	
Louisiana Tech vs. UCLA	11 a.m.
<i>Junkanoo Jam, Freeport, Bahamas</i>	
Oregon State vs. Hofstra	11:15 p.m.
<i>San Juan Tournament, San Juan, P.R.</i>	

California vs. Texas A&M	1 p.m.
<i>South Point Tournament, Las Vegas, Nev.</i>	

Arizona at North Texas	1 p.m.
Arizona State vs. South Carolina	5:30 p.m.
<i>Rainbow Wahine Showdown, Honolulu, Hawai'i</i>	

Utah vs. Boston College	6 p.m.
<i>Junkanoo Jam, Freeport, Bahamas</i>	

San Jose State at Washington State	8 p.m.
Stanford vs. Missouri State	11:30 a.m.
<i>Gulf Coast Showcase, Estero, Fla.</i>	

Washington vs. Syracuse	7:45 p.m.
<i>South Point Tournament, Las Vegas, Nev.</i>	

## Saturday, November 28

Ball State/Florida at Colorado	5/7:30 p.m.
<i>Omni Hotels Classic, Boulder, Colo.</i>	
Oregon State vs. Arkansas	4:30 p.m.
<i>San Juan Tournament, San Juan, P.R.</i>	

North Dakota at Oregon	3 p.m.
California vs. Liberty	3:15 p.m.
<i>South Point Tournament, Las Vegas, Nev.</i>	

Arizona State at Hawai'i	7 p.m.
<i>Rainbow Wahine Showdown, Honolulu, Hawai'i</i>	

Stanford vs. Dayton/Maine	TBA
<i>Gulf Coast Showcase, Estero, Fla.</i>	

UCLA vs. Denver/Notre Dame	11 a.m./1:15 p.m.
Washington vs. Texas Tech	7:45 p.m.
<i>South Point Tournament, Las Vegas, Nev.</i>	

## Sunday, November 29

USC vs. Iona	10 a.m.
Arizona State vs. CSU Bakersfield	5:30 p.m.
<i>Rainbow Wahine Showdown, Honolulu, Hawai'i</i>	
Stanford vs. TBD	TBA
<i>Gulf Coast Showcase, Estero, Fla.</i>	

## Monday, November 30

Washington State at Oklahoma State	8 p.m.
San Jose State at Oregon	9 p.m.

## DECEMBER

## Wednesday, December 2

Colorado at Colorado State	7 p.m.
New Mexico State at Arizona	7 p.m.
Portland at Washington	8 p.m.

## Thursday, December 3

Oregon State at Marquette	5 p.m.
Washington State at Boise State	7 p.m.
CSUN at Utah	7 p.m.

## Friday, December 4

Southern Utah at USC	8 p.m.
----------------------	--------

## Saturday, December 5

Pacific at Arizona	1 p.m.
Virginia Commonwealth at Arizona State	2 p.m.
ASU Classic, Tempe, Ariz.	
Saint Mary's (Calif.) at California	5 p.m.
<i>Cal Tournament, Berkeley, Calif.</i>	
CSU Bakersfield at UCLA	3 p.m.
Utah Valley at Oregon	3 p.m.

## Sunday, December 6

Columbia/Toledo at Arizona State	2:30 p.m.
<i>ASU Classic, Tempe, Ariz.</i>	
Washington State at San Diego	2 p.m.
Sacramento State/Villanova at California	2/4 p.m.
<i>Cal Tournament, Berkeley, Calif.</i>	
Colorado at Long Beach State	3 p.m.
UNLV at USC	3 p.m.
Oklahoma at Washington	4:30 p.m.

## Tuesday, December 8

Gonzaga at Washington State	7 p.m.
-----------------------------	--------

## Wednesday, Dec. 9

Northern Arizona at Colorado	7 p.m.
Utah at Creighton	7 p.m.

## Thursday, December 10

Louisiana Tech at Arizona	7 p.m.
---------------------------	--------

## Saturday, December 12

Arizona State at Syracuse	11 a.m.
Nebraska at California	6 p.m.
Missouri at Colorado	1:30 p.m.
Washington State at Saint Mary's (Calif.)	2 p.m.
Utah at BYU	3 p.m.
Portland at Oregon	3 p.m.
Idaho at Oregon State	3 p.m.
Nebraska at California	6 p.m.
Washington at South Dakota	9 p.m.

## Sunday, December 13

Stanford at Texas	12 p.m.
UCLA at Michigan	12 p.m.
Long Beach State at USC	5 p.m.

## Monday, December 14

Arizona State at Hartford	10 a.m.
---------------------------	---------

## Tuesday, December 15

CSU Bakersfield at Oregon State	1 p.m.
UC Riverside at Oregon	7 p.m.

## Wednesday, December 16

Tennessee at Stanford	7 p.m.
UC Irvine at UCLA	8 p.m.

## Thursday, December 17

Portland State at Oregon	7 p.m.
--------------------------	--------

## Friday, December 18

Florida A&M at USC	7 p.m.
<i>Women of Troy Classic, Los Angeles, Calif.</i>	
UC Riverside at Washington	8 p.m.
UCLA at Sacramento State	8:05 p.m.

## Saturday, December 19

Arizona vs. SMU	2:30 p.m.
<i>Puerto Rico Classic, San Juan, P.R.</i>	
Cornell at Stanford	3 p.m.
Marquette at Arizona State	3 p.m.
Presbyterian at Colorado	3:30 p.m.
Tennessee at Oregon State	7 p.m.
Fresno State at Utah	7 p.m.

## Sunday, December 20

Arizona vs. Florida Gulf Coast	12:30 p.m.
<i>Puerto Rico Classic, San Juan, P.R.</i>	
Albany/UC Davis at USC	2/4 p.m.
<i>Women of Troy Classic, Los Angeles, Calif.</i>	
Washington State at Kansas	6 p.m.

## Monday, December 21

Arizona vs. Gardner-Webb	2:30 p.m.
<i>Puerto Rico Classic, San Juan, P.R.</i>	
Florida State at Arizona State	3 p.m.



# 2015-16 PAC-12 COMPOSITE SCHEDULE

Cal Poly at Oregon State  
 UCLA at California  
 Colorado at Wyoming  
 Weber State at Washington

**Tuesday, December 22**

CSU Bakersfield at Stanford  
 Utah at Utah State

**Monday, December 28**

CSUN at Arizona State  
 Oregon State at Notre Dame  
 Seattle at Oregon  
 Chattanooga at Stanford  
 UCLA at UC Riverside  
 UC Irvine at USC

**Tuesday, December 29**

George Mason at Arizona  
 Washington at Washington State  
 UC Davis at Utah

**Wednesday, December 30**

USC at UCLA  
 CSUN at California

**JANUARY**

**Saturday, January 2**

Washington at Colorado  
 Stanford at Arizona  
 Oregon at UCLA  
 Washington State at Utah  
 Oregon State at USC  
 California at Arizona State

**Monday, January 4**

Oregon at USC  
 Washington at Utah  
 Stanford at Arizona State  
 California at Arizona  
 Washington State at Colorado  
 Oregon State at UCLA

**Friday, January 8**

Oregon at Oregon State  
 Colorado at California  
 Arizona State at Washington  
 Arizona at Washington State  
 Utah at Stanford

**Sunday, January 10**

Colorado at Stanford  
 Arizona State at Washington State  
 Utah at California  
 Arizona at Washington  
 UCLA at USC  
 Oregon State at Oregon

**Friday, January 15**

Colorado at Arizona State  
 Utah at Arizona  
 Stanford at Oregon  
 UCLA at Washington  
 USC at Washington State  
 California at Oregon State

**Sunday, January 17**

Utah at Arizona State  
 UCLA at Washington State  
 Colorado at Arizona  
 California at Oregon  
 USC at Washington  
 Stanford at Oregon State

4 p.m. **Friday, January 22**

Oregon at Colorado  
 Arizona at Arizona State  
 California at UCLA  
 Oregon State at Utah  
 Stanford at USC

3 p.m. **Saturday, January 23**

Washington State at Washington

TBA **Sunday, January 24**

Oregon State at Colorado  
 California at USC  
 Arizona State at Arizona  
 Stanford at UCLA  
 Oregon at Utah

**Friday, January 29**

Washington State at California  
 Arizona at Oregon State  
 UCLA at Colorado  
 USC at Utah  
 Arizona State at Oregon  
 Washington at Stanford

8 p.m. **Sunday, January 31**

Arizona at Oregon  
 Washington State at Stanford  
 UCLA at Utah  
 Washington at California  
 USC at Colorado

**FEBRUARY**

**Monday, February 1**

Arizona State at Oregon State

6 p.m. **Tuesday, February 2**

California at Stanford

6 p.m. **Thursday, February 4**

Colorado at Utah

8 p.m. **Friday, February 5**

UCLA at Arizona State  
 Oregon State at Washington  
 USC at Arizona  
 Stanford at California  
 Oregon at Washington State

8 p.m. **Sunday, February 7**

Oregon State at Washington State  
 Utah at Colorado  
 UCLA at Arizona  
 Oregon at Washington  
 USC at Arizona State

1 p.m. **Friday, February 12**

Utah at Oregon  
 Arizona State at California  
 Washington at USC  
 Washington State at UCLA  
 Arizona at Stanford  
 Colorado at Oregon State

9 p.m. **Sunday, February 14**

Washington at UCLA  
 Arizona at California  
 Colorado at Oregon  
 Washington State at USC  
 Arizona State at Stanford  
 Utah at Oregon State

12 p.m.

1 p.m.

2 p.m.

3 p.m.

3 p.m.

7 p.m.

**Friday, February 19**

6 p.m. Washington at Arizona  
 7 p.m. Washington State at Arizona State  
 7 p.m. California at Utah  
 8 p.m. UCLA at Oregon  
 9 p.m. Stanford at Colorado  
 USC at Oregon State

3 p.m.

California at Colorado  
 Washington at Arizona State  
 Washington State at Arizona  
 Stanford at Utah  
 USC at Oregon  
 UCLA at Oregon State

2 p.m. **Thursday, February 25**

Colorado at Washington State  
 Utah at Washington

7 p.m. **Friday, February 26**

7 p.m. Arizona State at USC  
 7 p.m. Oregon at California  
 9 p.m. Oregon State at Stanford  
 9 p.m. Arizona at UCLA

1 p.m. **Saturday, February 27**

Utah at Washington State  
 Colorado at Washington

2 p.m. **Sunday, February 28**

7 p.m. Oregon at Stanford  
 Oregon State at California  
 Arizona State at UCLA  
 Arizona at USC

9 p.m.

**PAC-12 TOURNAMENT**

**Thursday-Sunday, March 3-6, 2016**

**KeyArena, Seattle**

**Thursday, March 3**

6 p.m. First Round Game #1 (PAC12) 12:30 p.m.  
 7 p.m. First Round Game #2 (PAC12) 3 p.m.  
 8 p.m. First Round Game #3 (PAC12) 7 p.m.  
 8 p.m. First Round Game #4 (PAC12) 9:30 p.m.

**Friday, March 4**

Quarterfinal Game #1 (PAC12) 12:30 p.m.  
 Quarterfinal Game #2 (PAC12) 3 p.m.  
 Quarterfinal Game #3 (PAC12) 7 p.m.  
 Quarterfinal Game #4 (PAC12) 9:30 p.m.

**Saturday, March 5**

Semifinal Game #1 (PAC12) 7 p.m.  
 Semifinal Game #2 (PAC12) 9:30 p.m.

**Sunday, March 6**

Championship Game (ESPN) 7 p.m.

7 p.m. PT

8 p.m. PT

8 p.m. PT

8:30 p.m.

8:30 p.m.

12 p.m.

1 p.m.

5 p.m.

5 p.m.

7 p.m.

2 p.m.



# ALL-TIME OPPONENT SERIES HISTORY

CU Ranking	Opp. Ranking	CU Ranking	Opp. Ranking	CU Ranking	Opp. Ranking	CU Ranking	Opp. Ranking						
<b>ADAMS STATE (2-0)</b> (Home: 2-0) Nov. 29, 1982 W 100-58 (H) Nov. 23, 1985 W 106-54 (H)		Feb. 3, 1977 W 84-77 (H) Jan. 20, 1978 W 83-55 (H) Jan. 27, 1979 W 77-64 (A) Dec. 6, 1980 W 72-64 (A) Nov. 19, 1983 W 95-73 (H) 16 Jan. 4, 1985 W 86-68 (N) Dec. 9, 1987 W 103-63 (H) Jan. 19, 2012 L 43-64 (A) Feb. 11, 2012 L 47-60 (H) Jan. 18, 2013 W 57-43 (H) 21/25 Feb. 17, 2013 W 71-63 (A) 21/25 Jan. 26, 2014 L 66-68 (H) RV/RV 14/23 Feb. 21, 2014 L 51-55 (A) 20/24 Jan. 30, 2015 L 60-68 (H) 11/11 Mar. 1, 2015 L 46-59 (A) 10/10		Jan. 7, 2004 W 69-59 (A) 14/14 24/RV Feb. 26, 2005 L 65-84 (H) 6/8 Feb. 22, 2006 L 40-86 (A) 10/10 Feb. 21, 2007 L 67-75 (H) 14/14 Feb. 27, 2008 L 62-76 (A) 8/8 Jan. 10, 2009 L 50-63 (H) 6/5 Feb. 6, 2010 L 42-76 (A) 15/17 Mar. 11, 2010 L 65-72 (N) 16/18 Mar. 5, 2011 L 59-81 (H) 3/3		<b>CAL POLY-POMONA (0-1)</b> (Neutral: 0-1) Dec. 18, 1987 L 68-74 (N)		<b>CSU BAKERSFIELD (1-0)</b> (Home: 1-0) Dec. 28, 2006 W 76-61 (H)		<b>CAL STATE-FULLERTON (4-1)</b> (Home: 2-0, Away: 1-1, Neutral: 1-0) Dec. 3, 1981 W 89-77 (N) Dec. 12, 1986 W 77-51 (H) Dec. 30, 1987 W 77-63 (A) Nov. 18, 2005 W 100-71 (H) Dec. 7, 2006 L 77-89 (A)			
<b>AIR FORCE (3-0)</b> (Home: 2-0, Away: 1-0) Jan. 28, 1978 W 78-57 (H) Feb. 3, 1979 W 90-69 (A) Dec. 5, 2001 W 80-47 (H) 15/14		<b>ALBANY (1-0)</b> (Home: 1-0) Nov. 17, 2000 W 93-43 (H)		<b>ALCORN STATE (2-0)</b> (Home: 1-0, Neutral: 1-0) Dec. 8, 1996 W 62-45 (N) 17/13 Nov. 15, 2013 W 83-33 (H) 17/17		<b>CAL STATE NORTHTRIDGE (1-0)</b> (Home: 1-0) Nov. 19, 2006 W 80-64 (H)		<b>CENTRAL FLORIDA (1-0)</b> (Home: 1-0) Nov. 16, 2008 W 86-59 (H)					
<b>AMERICAN (1-0)</b> (Neutral: 1-0) Dec. 4, 1998 W 90-70 (N)		<b>AMERICAN (1-0)</b> (Neutral: 1-0) Dec. 4, 1998 W 90-70 (N)		<b>ARKANSAS (2-1)</b> (Home: 1-0, Away: 1-1) Jan. 9, 1992 L 51-56 (A) Dec. 8, 1992 W 94-67 (H) 19/17 Nov. 21, 1995 W 73-71 (A) 11/11 9/9		<b>BOSTON UNIVERSITY (1-0)</b> (Neutral: 1-0) Dec. 1, 1990 W 94-56 (N)		<b>CAL STATE MICHIGAN (2-0)</b> (Home: 2-0) Dec. 21, 1990 W 63-60 (H) Nov. 29, 1997 W 71-49 (H) 16/17					
<b>ARIZONA (14-3)</b> (Home: 8-1, Away: 6-2) Feb. 21, 1975 L 36-75 (H) Feb. 14, 1976 L 65-70 (A) * Feb. 5, 1977 W 79-58 (H) Feb. 18, 1978 W 73-64 (H) Feb. 22, 1979 W 90-71 (A) Dec. 11, 1988 L 69-75 (A) * 20/25 Dec. 31, 1989 W 78-69 (H) Jan. 1, 1991 W 75-69 (A) * Nov. 24, 1991 W 74-53 (H) Jan. 22, 2012 W 56-54 (A) Feb. 9, 2012 W 69-59 (H) Jan. 20, 2013 W 79-36 (H) 21/25 Feb. 15, 2013 W 55-42 (A) 21/25 Jan. 24, 2014 W 68-47 (H) RV/RV Feb. 23, 2014 W 61-56 (A) * Feb. 1, 2015 W 81-69 (H) Feb. 27, 2015 W 66-51 (A)		<b>ARKANSAS-PINE BLUFF (1-0)</b> (Home: 1-0) Dec. 2, 2008 W 73-39 (H)		<b>ARKANSAS STATE (1-0)</b> (Home: 1-0) Nov. 22, 2014 W 80-69 (H)		<b>BOWLING GREEN (2-0)</b> (Home: 2-0) Nov. 29, 1996 W 74-62 (H) 18/13 Nov. 23, 2001 W 96-44 (H) 14/12		<b>CAL STATE NORTHTRIDGE (1-0)</b> (Home: 1-0) Nov. 19, 2006 W 80-64 (H)					
<b>ARIZONA STATE (11-6)</b> (Home: 6-3, Away: 4-3, Neutral: 1-0) Feb. 22, 1975 W 71-44 (H) Feb. 12, 1976 W 55-46 (A)		<b>AUBURN (0-1)</b> (Home: 0-1) Mar. 17, 1996 L 61-68 (H) * 17/17 19/18		<b>BAYLOR (8-12)</b> (Home: 5-5, Away: 2-6, Neutral: 1-1) Dec. 22, 1980 W 75-50 (H) 20 Dec. 7, 1985 W 75-62 (N) Dec. 21, 1992 W 84-58 (A) 13/13 Jan. 2, 1996 W 81-59 (H) 13/10 Jan. 22, 1997 W 83-60 (H) Jan. 10, 1998 L 57-76 (A) Feb. 20, 1999 L 52-62 (H) Feb. 23, 2000 L 90-91 (A) * Feb. 3, 2001 W 85-66 (H) 23/RV 20/22 Feb. 20, 2002 L 69-80 (A) 11/13 9/8 Jan. 29, 2003 W 66-59 (H)		<b>BRIGHAM YOUNG (8-7)</b> (Home 8-3, Away 2-5, Neutral 1-0) Feb. 15, 1975 L 44-60 (A) Feb. 7, 1976 L 77-81 (H) Jan. 29, 1977 L 65-89 (A) Feb. 24, 1978 L 69-84 (H) Mar. 2, 1979 L 82-99 (A) Mar. 7, 1980 L 91-101 (A) Mar. 6, 1981 W 97-82 (N) Jan. 29, 1982 W 109-75 (H) Feb. 20, 1982 L 75-77 (A) Nov. 18, 1983 W 89-72 (H) Jan. 8, 1986 W 85-84 (A) Nov. 23, 1996 W 78-73 (A) 18/15 Nov. 22, 1997 W 84-68 (H) 18/16 Mar. 11, 1999 W 70-53 (H) Mar. 22, 2003 W 84-45 (H)		<b>BUTLER (1-0)</b> (Home: 1-0) Nov. 25, 2000 W 86-57 (H)		<b>CHARLESTON (1-0)</b> (Neutral: 1-0) Dec. 20, 1985 W 81-66 (N)		<b>CHARLOTTE (1-0)</b> (Home: 1-0) Nov. 25, 2006 W 78-65 (H)	
<b>BUFFALO (2-0)</b> (Home: 1-0, Away: 1-0) Jan. 2, 2003 W 76-47 (A) 25/25 Jan. 3, 2004 W 98-47 (H) 13/13		<b>BUFFALO (2-0)</b> (Home: 1-0, Away: 1-0) Jan. 2, 2003 W 76-47 (A) 25/25 Jan. 3, 2004 W 98-47 (H) 13/13		<b>BUFFALO (2-0)</b> (Home: 1-0, Away: 1-0) Jan. 2, 2003 W 76-47 (A) 25/25 Jan. 3, 2004 W 98-47 (H) 13/13		<b>BUTLER (1-0)</b> (Home: 1-0) Nov. 25, 2000 W 86-57 (H)		<b>COLGATE (1-0)</b> (Home: 1-0) Dec. 30, 2010 W 74-52 (H)					
<b>CALIFORNIA (5-8)</b> (Home: 3-3, Away: 2-3, Neutral: 0-2) Dec. 4, 1981 W 67-56 (A) Nov. 27, 1988 W 83-68 (H) Dec. 8, 2002 W 66-47 (A) Nov. 29, 2003 W 74-63 (H) 20/16 Mar. 21, 2011 W 81-65 (H) Jan. 12, 2012 L 55-68 (H) Feb. 25, 2012 L 43-64 (A) Mar. 8, 2012 L 59-68 (N) Jan. 6, 2013 L 49-53 (H) 20/25 7/7 Jan. 25, 2013 L 56-59 (A) 20/23 7/7 Jan. 10, 2014 L 55-57 (H) 17/18 19/19 Jan. 5, 2015 L 59-75 (A) RV/RV Mar. 7, 2015 L 55-68 (N) RV/RV		<b>CALIFORNIA (5-8)</b> (Home: 3-3, Away: 2-3, Neutral: 0-2) Dec. 4, 1981 W 67-56 (A) Nov. 27, 1988 W 83-68 (H) Dec. 8, 2002 W 66-47 (A) Nov. 29, 2003 W 74-63 (H) 20/16 Mar. 21, 2011 W 81-65 (H) Jan. 12, 2012 L 55-68 (H) Feb. 25, 2012 L 43-64 (A) Mar. 8, 2012 L 59-68 (N) Jan. 6, 2013 L 49-53 (H) 20/25 7/7 Jan. 25, 2013 L 56-59 (A) 20/23 7/7 Jan. 10, 2014 L 55-57 (H) 17/18 19/19 Jan. 5, 2015 L 59-75 (A) RV/RV Mar. 7, 2015 L 55-68 (N) RV/RV		<b>CALIFORNIA (5-8)</b> (Home: 3-3, Away: 2-3, Neutral: 0-2) Dec. 4, 1981 W 67-56 (A) Nov. 27, 1988 W 83-68 (H) Dec. 8, 2002 W 66-47 (A) Nov. 29, 2003 W 74-63 (H) 20/16 Mar. 21, 2011 W 81-65 (H) Jan. 12, 2012 L 55-68 (H) Feb. 25, 2012 L 43-64 (A) Mar. 8, 2012 L 59-68 (N) Jan. 6, 2013 L 49-53 (H) 20/25 7/7 Jan. 25, 2013 L 56-59 (A) 20/23 7/7 Jan. 10, 2014 L 55-57 (H) 17/18 19/19 Jan. 5, 2015 L 59-75 (A) RV/RV Mar. 7, 2015 L 55-68 (N) RV/RV		<b>CALIFORNIA (5-8)</b> (Home: 3-3, Away: 2-3, Neutral: 0-2) Dec. 4, 1981 W 67-56 (A) Nov. 27, 1988 W 83-68 (H) Dec. 8, 2002 W 66-47 (A) Nov. 29, 2003 W 74-63 (H) 20/16 Mar. 21, 2011 W 81-65 (H) Jan. 12, 2012 L 55-68 (H) Feb. 25, 2012 L 43-64 (A) Mar. 8, 2012 L 59-68 (N) Jan. 6, 2013 L 49-53 (H) 20/25 7/7 Jan. 25, 2013 L 56-59 (A) 20/23 7/7 Jan. 10, 2014 L 55-57 (H) 17/18 19/19 Jan. 5, 2015 L 59-75 (A) RV/RV Mar. 7, 2015 L 55-68 (N) RV/RV		<b>CALIFORNIA (5-8)</b> (Home: 3-3, Away: 2-3, Neutral: 0-2) Dec. 4, 1981 W 67-56 (A) Nov. 27, 1988 W 83-68 (H) Dec. 8, 2002 W 66-47 (A) Nov. 29, 2003 W 74-63 (H) 20/16 Mar. 21, 2011 W 81-65 (H) Jan. 12, 2012 L 55-68 (H) Feb. 25, 2012 L 43-64 (A) Mar. 8, 2012 L 59-68 (N) Jan. 6, 2013 L 49-53 (H) 20/25 7/7 Jan. 25, 2013 L 56-59 (A) 20/23 7/7 Jan. 10, 2014 L 55-57 (H) 17/18 19/19 Jan. 5, 2015 L 59-75 (A) RV/RV Mar. 7, 2015 L 55-68 (N) RV/RV		<b>COLORADO COLLEGE (2-0)</b> (Home: 2-0) Nov. 20, 1981 W 97-39 (H) Feb. 15, 1983 W 83-58 (H)		<b>COLORADO STATE (35-11)</b> (Home: 23-2, Away: 12-9) Jan. 31, 1975 L 53-74 (H) Feb. 6, 1975 L 42-81 (A) Nov. 20, 1975 W 53-38 (A) Jan. 23, 1976 W 85-48 (H) Jan. 29, 1976 W 70-41 (H) Dec. 3, 1976 W 90-79 (H) Jan. 14, 1977 W 62-40 (A) Nov. 17, 1977 W 86-62 (H) Mar. 2, 1978 L 69-80 (A) Nov. 17, 1978 W 83-60 (A) Jan. 13, 1979 W 97-55 (H) Nov. 16, 1979 W 112-48 (H) Dec. 20, 1980 W 94-77 (A) 20 Dec. 19, 1981 W 79-76 (H) 18 Mar. 13, 1982 W 70-61 (H) Nov. 20, 1982 W 78-49 (H) Dec. 2, 1982 W 90-56 (H) Dec. 8, 1982 W 72-60 (A) Dec. 7, 1983 W 82-69 (H) Jan. 10, 1984 L 48-63 (A) Dec. 5, 1984 L 56-61 (A) Dec. 11, 1985 W 89-61 (H) Dec. 10, 1986 W 75-64 (A) Jan. 9, 1988 W 82-59 (H) Dec. 30, 1988 W 74-47 (A) Dec. 30, 1989 W 91-61 (H) Jan. 5, 1991 L 51-57 (H) Nov. 26, 1991 W 77-50 (A) Dec. 10, 1992 W 90-69 (A) 19/17 Nov. 30, 1993 W 75-55 (H) 11/12 Dec. 1, 1999 L 67-73 (A)	





# ALL-TIME OPPONENT SERIES HISTORY

CU Ranking	Opp. Ranking	CU Ranking	Opp. Ranking	CU Ranking	Opp. Ranking	CU Ranking	Opp. Ranking
Dec. 6, 2000 L	70-72 (H)	<b>EASTERN WASHINGTON (2-0)</b> <i>(Home: 1-0, Neutral: 1-0)</i>		<b>HAWAII (2-0)</b> <i>(Away: 2-0)</i>		Jan. 21, 1986 L	61-63 (A)
Nov. 28, 2001 L	69-81 (A) 11/10 15/16	Nov. 29, 1980 W	97-53 (H)	Dec. 3, 1988 W	74-72 (A)	Feb. 12, 1986 L	72-74 (H)
Dec. 12, 2002 W	65-51 (H)	Nov. 19, 1986 W	62-48 (N)	Jan. 4, 2009 W	67-55 (A)	Jan. 14, 1987 W	72-71 (A)
Dec. 3, 2003 W	81-74 (A) 17/15	<b>EVANSVILLE (2-0)</b> <i>(Home: 1-0, Neutral: 1-0)</i>		<b>HELPING HAND (1-0)</b> <i>(Home: 1-0)</i>		Feb. 14, 1987 L	66-80 (H)
Dec. 8, 2004 W	83-77 (H)	Dec. 7, 2002 W	74-42 (N)	Nov. 11, 1977 W	79-38 (H)	Jan. 27, 1988 L	63-72 (A)
Nov. 30, 2005 L	83-86 (A)	Nov. 26, 2010 W	55-53 (H)	<b>HOLY CROSS (1-1)</b> <i>(Home: 1-0, Neutral: 0-1)</i>		Feb. 10, 1988 W	74-52 (H)
Nov. 29, 2006 W	56-51 (H)	<b>FLATIRONS (1-0)</b> <i>(Home: 1-0)</i>		Dec. 21, 1985 L	76-83 (N)	Jan. 18, 1989 W	66-61 (A) 20/22
Dec. 1, 2007 W	82-47 (A)	Nov. 28, 1975 W	49-42 (H)	Mar. 16, 1995 W	83-49 (H) 2/3	Feb. 4, 1989 W	76-60 (H) 16/18
Nov. 19, 2008 W	93-63 (H)	<b>FLORIDA (1-1)</b> <i>(Home: 1-0, Away: 0-1)</i>		<b>HOUSTON (1-1)</b> <i>(Home: 1-1)</i>		Jan. 21, 1990 W	73-60 (H)
Dec. 11, 2009 L	61-69 (A)	Dec. 22, 2000 W	98-62 (H) 16/16	Dec. 4, 1987 L	78-79 (H)	Feb. 14, 1990 W	69-59 (A)
Dec. 8, 2010 W	73-49 (H)	Dec. 21, 2001 L	50-61 (A) 14/12 20/20	Nov. 24, 2001 W	88-58 (H) 14/12	Mar. 3, 1990 L	61-70 (N)
Nov. 20, 2011 W	72-53 (A)	<b>FLORIDA INTERNATIONAL (1-0)</b> <i>(Away: 1-0)</i>		<b>HOWARD (1-0)</b> <i>(Home: 1-0)</i>		Jan. 9, 1991 L	57-67 (A)
Dec. 5, 2012 W	72-46 (H)	Jan. 4, 1993 W	74-71 (A) 10/10	Nov. 24, 2000 W	96-45 (H)	Feb. 17, 1991 W	81-70 (H)
Nov. 12, 2013 W	63-59 (A) 17/19	<b>FLORIDA STATE (0-1)</b> <i>(Away: 0-1)</i>		<b>IDAHO (3-0)</b> <i>(Home: 3-0)</i>		Jan. 29, 1992 W	65-48 (A)
Nov. 29, 2014 W	87-81 (H)**	Nov. 23, 1984 L	60-66 (A)	Nov. 27, 1998 W	77-66 (H)	Feb. 8, 1992 W	79-63 (H)
<b>COLORADO WOMEN'S COLLEGE (3-0)</b> <i>(Home: 3-0)</i>		Dec. 4, 2011 W	68-59 (H)	Dec. 4, 1987 L	78-79 (H)	Jan. 24, 1993 W	92-52 (A) 4/4
Dec. 29, 1979 W	103-52 (H)	Nov. 14, 1980 W	77-61 (A)	Nov. 24, 2001 W	88-58 (H) 14/12	Feb. 19, 1993 W	79-29 (H) 4/4
Nov. 18, 1980 W	107-73 (H)	Dec. 7, 1997 W	82-54 (N) 16/16	<b>IDAHO STATE (7-1)</b> <i>(Home: 5-0, Away: 2-1)</i>		Jan. 23, 1994 W	73-48 (H) 6/6
Dec. 16, 1981 W	89-67 (H) 18	<b>FORDHAM (2-0)</b> <i>(Away: 1-0, Neutral: 1-0)</i>		Feb. 1, 1980 W	81-52 (A)	Feb. 18, 1994 W	79-52 (A) 3/3
<b>CREIGHTON (2-2)</b> <i>(Home: 0-1, Away: 0-1, Neutral: 2-0)</i>		Jan. 14, 1980 W	77-61 (A)	Jan. 31, 1981 W	94-37 (H)	Mar. 5, 1994 W	66-55 (N) 3/3
Nov. 27, 1987 W	76-60 (N)	Dec. 7, 1997 W	82-54 (N) 16/16	Feb. 21, 1981 W	94-61 (A)	Jan. 20, 1995 W	67-50 (A) 6/6
Dec. 4, 2004 L	68-84 (H)	<b>FORT CARSON (1-0)</b> <i>(Home: 1-0)</i>		Jan. 22, 1982 L	55-61 (A) 16	Feb. 19, 1995 W	83-38 (H) 3/3
Dec. 3, 2005 L	72-77 (A)	Dec. 16, 1980 W	134-33 (H) 20	Feb. 13, 1982 W	116-55 (H)	Mar. 4, 1995 W	73-38 (N) 3/3
Dec. 21, 2011 W	52-49 (N)	<b>FORT HAYS STATE (1-0)</b> <i>(Home: 1-0)</i>		Nov. 28, 2003 W	95-65 (H) 20/16	Jan. 19, 1996 W	78-66 (H) 15/11
<b>DARTMOUTH (1-0)</b> <i>(Home: 1-0)</i>		Jan. 5, 1983 W	89-37 (H)	Dec. 30, 2008 W	73-57 (H)	Feb. 18, 1996 W	62-54 (A) 18/16
Dec. 21, 2007 W	57-43 (H)	<b>FRESNO STATE (0-1)</b> <i>(Away: 0-1)</i>		<b>ILLINOIS (4-2)</b> <i>(Home: 3-1, Away: 1-1)</i>		Jan. 18, 1997 W	68-66 (A)**
<b>DAYTON (1-1)</b> <i>(Home: 1-0, Neutral: 0-1)</i>		Jan. 7, 1987 L	69-70 (A)*	Nov. 29, 1991 W	83-65 (H)	Mar. 1, 1997 W	64-55 (H)
Nov. 25, 1988 W	86-53 (H)	<b>GEORGE WASHINGTON (2-0)</b> <i>(Home: 1-0, Neutral: 1-0)</i>		Jan. 4, 1998 L	44-88 (A) 21/23 13/13	Mar. 5, 1997 W	56-39 (N)
Dec. 19, 2010 L	50-70 (N)	Dec. 28, 1987 W	75-58 (H)	Dec. 28, 1999 W	78-70 (H) 17/20	Jan. 14, 1998 L	67-76 (H)
<b>DELAWARE (1-0)</b> <i>(Neutral: 1-0)</i>		Mar. 23, 1995 W	77-61 (N) 2/3 18/17	Dec. 4, 2010 L	59-63 (H)	Feb. 11, 1998 L	43-58 (A) 23/22
Dec. 22, 1985 W	84-68 (N)	<b>GEORGIA (0-1)</b> <i>(Neutral: 0-1)</i>		Dec. 1, 2012 W	69-62 (A)	Jan. 13, 1999 L	84-90 (H) 14/15
<b>DELTA STATE (1-0)</b> <i>(Home: 1-0)</i>		Mar. 25, 1995 L	79-82 (N) 2/3 12/12	Dec. 7, 2013 W	79-56 (H) 11/17	Feb. 13, 1999 L	70-86 (A) 16/16
Jan. 30, 1981 W	83-65 (H)	<b>GEORGIA SOUTHERN (1-0)</b> <i>(Home: 1-0)</i>		<b>ILLINOIS-CHICAGO (1-0)</b> <i>(Neutral: 1-0)</i>		Jan. 8, 2000 L	68-83 (H) 10/11
<b>DENVER (8-2)</b> <i>(Home: 5-0, Away: 3-2)</i>		Nov. 27, 2009 W	62-50 (H)	Nov. 20, 2009 W	63-49 (N)	Feb. 5, 2000 L	64-82 (A) 8/9
Nov. 15, 1977 W	95-72 (A)	<b>GEORGIA TECH (0-1)</b> <i>(Away: 0-1)</i>		<b>ILLINOIS STATE (1-1)</b> <i>(Home: 1-0, Away: 0-1)</i>		Jan. 27, 2001 L	61-95 (A) 25/RV 7/7
Dec. 13, 1978 W	85-50 (H)	Nov. 21, 1984 L	56-76 (A)	Nov. 26, 1988 W	74-60 (H)	Feb. 14, 2001 W	73-66 (H) 19/21 6/6
Nov. 14, 1998 W	70-58 (H)	<b>GONZAGA (3-0)</b> <i>(Home: 2-0, Away 1-0)</i>		Nov. 30, 1989 L	60-72 (A)	Jan. 23, 2002 W	86-73 (H) 20/19 14/10
Nov. 19, 1999 L	67-71 (A)	Dec. 10, 1989 W	58-41 (A)	<b>INDIANA (0-1)</b> <i>(Neutral: 0-1)</i>		Feb. 9, 2002 L	75-85 (A) 13/13 12/10
Dec. 2, 2009 W	84-57 (H)	Nov. 23, 1990 W	87-59 (H)	Dec. 6, 1985 L	66-69 (N)	Mar. 6, 2002 L	56-58 (N) 10/11 11/10
Nov. 16, 2010 L	69-70 (A)	Mar. 24, 2008 W	82-68 (H)	<b>IOWA (3-2)</b> <i>(Home: 2-0, Away: 0-2, Neutral: 1-0)</i>		Jan. 8, 2003 W	64-63 (H) 24/23
Dec. 8, 2011 W	71-36 (H)	<b>GRAMBLING STATE (1-0)</b> <i>(Home: 1-0)</i>		Jan. 3, 1993 W	72-70 (N) 10/10 4/4	Feb. 26, 2003 W	79-71 (A)
Dec. 11, 2012 W	83-63 (A) RV/--	Dec. 30, 2009 W	92-43 (H)	Dec. 10, 2000 L	66-92 (A)	Jan. 25, 2004 W	62-51 (A) 14/14
Dec. 12, 2013 W	83-61 (H) 11/15	<b>HARTFORD (1-0)</b> <i>(Home: 1-0)</i>		Dec. 2, 2001 W	92-83 (H) 11/10	Feb. 11, 2004 W	72-67 (H) 12/12
Nov. 25, 2014 W	77-49 (A)	Nov. 29, 2002 W	69-40 (H)	Nov. 20, 2013 W	90-87 (H) 16/20 RV/RV	Jan. 8, 2005 L	64-76 (H)
<b>DETROIT MERCY (1-0)</b> <i>(Home: 1-0)</i>		Nov. 28, 2009 W	67-65 (H)	Dec. 7, 2014 L	63-78 (A) 22/19	Feb. 2, 2005 L	76-103 (A) 19/18
Nov. 24, 2002 W	86-43 (H)	<b>HARVARD (2-0)</b> <i>(Home 1-0, Neutral 1-0)</i>		<b>INDIANA STATE (1-1)</b> <i>(Home: 1-0, Away: 0-1)</i>		Mar. 8, 2005 L	62-64 (N) 18/19
<b>DRAKE (0-1)</b> <i>(Home: 0-1)</i>		Jan. 22, 1977 W	72-71 (H)	Nov. 30, 1989 L	60-72 (A)	Jan. 21, 2006 L	71-86 (H)
Mar. 14, 1999 L	66-82 (H)	Jan. 17, 1981 W	72-64 (N)	<b>INDIANA STATE (1-1)</b> <i>(Home: 1-0, Away: 0-1)</i>		Mar. 2, 2006 L	46-56 (A)
<b>DREXEL (1-1)</b> <i>(Home: 0-1, Neutral 1-0)</i>		Jan. 8, 1982 W	74-48 (N) 13	Nov. 26, 1988 W	74-60 (H)	Jan. 10, 2007 W	81-67 (H)
Dec. 27, 1993 W	70-46 (N) 6/6	Jan. 15, 1982 W	83-74 (N) 15	Nov. 30, 1989 L	60-72 (A)	Feb. 17, 2007 L	55-74 (A)
Nov. 29, 2008 L	63-67 (H)	Feb. 8, 1984 W	68-65 (H)	<b>INDIANA STATE (1-1)</b> <i>(Home: 1-0, Away: 0-1)</i>		Jan. 13, 2008 L	77-84 (H)** 23/RV
<b>DUKE (1-0)</b> <i>(Away: 1-0)</i>		Mar. 3, 1984 W	72-66 (A)	Nov. 26, 1988 W	74-60 (H)	Jan. 30, 2008 L	45-65 (A)
Jan. 5, 1980 W	78-64 (A)	Feb. 7, 1985 W	67-66 (H)	Nov. 30, 1989 L	60-72 (A)	Mar. 11, 2008 L	50-76 (N)
<b>EASTERN ILLINOIS (1-0)</b> <i>(Away: 1-0)</i>		Mar. 2, 1985 L	56-74 (A)	<b>INDIANA STATE (1-1)</b> <i>(Home: 1-0, Away: 0-1)</i>		Feb. 7, 2009 L	47-53 (H) 20/23
Mar. 16, 1988 W	78-72 (A)	<b>IOWA STATE (37-30)</b> <i>(Home: 19-10, Away: 12-16, Neutral: 6-4)</i>		Dec. 6, 1985 L	66-69 (N)	Feb. 25, 2009 L	63-76 (A) 25/24
		Jan. 3, 1993 W	72-70 (N) 10/10 4/4	<b>IOWA STATE (1-1)</b> <i>(Home: 1-0, Away: 0-1)</i>		Jan. 16, 2010 L	62-68 (H) RV/20
		Dec. 10, 2000 L	66-92 (A)	Jan. 3, 1993 W	72-70 (N) 10/10 4/4	Mar. 6, 2010 L	41-59 (A) 13/13
		Dec. 2, 2001 W	92-83 (H) 11/10	Dec. 10, 2000 L	66-92 (A)	Jan. 15, 2011 W	66-60 (H)* 17/16
		Nov. 20, 2013 W	90-87 (H) 16/20 RV/RV	Dec. 2, 2001 W	92-83 (H) 11/10	Feb. 19, 2011 L	45-71 (A) 20/23
		Dec. 7, 2014 L	63-78 (A) 22/19	Dec. 7, 2014 L	63-78 (A) 22/19	<b>JACKSONVILLE STATE (1-0)</b> <i>(Home: 1-0)</i>	
		<b>KANSAS (33-36)</b> <i>(Home: 18-12, Away: 12-18, Neutral 3-6)</i>				Dec. 30, 2007 W	91-64 (H) 25/RV
		Jan. 18, 1979 L	64-89 (N)				
		Jan. 18, 1980 L	76-98 (N)				
		Jan. 15, 1981 L	69-88 (A)				
		Feb. 10, 1983 L	72-83 (A)				
		Mar. 5, 1983 W	90-82 (H)				
		Feb. 4, 1984 L	61-68 (A)				
		Feb. 29, 1984 L	71-91 (H)				
		Jan. 26, 1985 L	55-66 (H)				
		Feb. 9, 1985 L	51-74 (A)				



# ALL-TIME OPPONENT SERIES HISTORY

CU Ranking		Opp. Ranking		CU Ranking		Opp. Ranking		CU Ranking		Opp. Ranking	
Jan. 29, 1986	W	56-49	(A)	Mar. 6, 1986	W	57-56	(N)	Dec. 3, 1994	L	62-77	(A) 10/8 4/4
Feb. 19, 1986	W	77-68	(H)	Jan. 21, 1987	L	61-71	(H)	Nov. 25, 1995	L	61-65	(H) 11/11 1/1
Jan. 31, 1987	W	83-65	(H)	Feb. 11, 1987	L	78-85	(A) *	<b>LOUISVILLE (1-1)</b>			
Feb. 24, 1987	L	62-65	(A)	Jan. 23, 1988	W	84-58	(H)	<i>(Home: 1-0, Away: 0-1)</i>			
Jan. 20, 1988	L	71-72	(H)	Feb. 17, 1988	W	86-70	(A)	Dec. 14, 2012 W 70-66 (H) RV/-- 8/8			
Feb. 6, 1988	W	56-55	(A)	Jan. 14, 1989	W	75-63	(A)	Dec. 21, 2013 L 62-69 (A) 11/14 7/7			
Mar. 7, 1988	L	69-70	(N)	Feb. 15, 1989	W	87-71	(H) 15/15	<b>MISSISSIPPI STATE (1-0)</b>			
Jan. 21, 1989	W	73-54	(H) 20/22	Jan. 13, 1990	L	67-71	(A)	<i>(Home: 1-0)</i>			
Feb. 25, 1989	W	70-51	(A) 10/12	Feb. 11, 1990	W	82-69	(H)	Dec. 4, 1992 W 95-59 (H) 25/24			
Jan. 31, 1990	W	78-61	(H)	Jan. 12, 1991	W	75-74	(H)	<b>MISSOURI (42-28)</b>			
Feb. 21, 1990	W	70-59	(A)	Feb. 13, 1991	W	71-68	(A)	<i>(Home: 22-8, Away: 16-16, Neutral 4-4)</i>			
Jan. 26, 1991	L	68-71	(H)	Feb. 5, 1992	W	69-56	(H)	Jan. 20, 1977 L 56-62 (H)			
Feb. 20, 1991	L	72-73	(A)	Feb. 26, 1992	W	65-42	(A)	Jan. 5, 1978 L 66-68 (N)			
Mar. 3, 1991	L	56-76	(N)	Mar. 7, 1992	W	79-27	(N)	Jan. 17, 1983 L 64-90 (A) 14			
Jan. 18, 1992	L	48-66	(A) 24/19	Jan. 8, 1993	W	61-33	(H) 7/7	Feb. 4, 1983 W 83-68 (H) 14			
Feb. 12, 1992	W	65-54	(H) 16/14	Feb. 7, 1993	W	61-51	(A) 5/5	Feb. 1, 1984 L 63-105 (A) 13			
Mar. 9, 1992	W	70-53	(N) 13/14	Mar. 6, 1993	W	55-41	(N) 6/10	Feb. 22, 1984 L 63-94 (H) 8			
Jan. 10, 1993	W	80-71	(H) 7/7	Jan. 7, 1994	W	65-58	(A) 4/4	Mar. 6, 1984 L 51-113 (A) 9			
Feb. 5, 1993	W	77-60	(A) 5/5	Feb. 6, 1994	W	66-57	(H) 7/8	Feb. 2, 1985 L 71-92 (A)			
Mar. 7, 1993	L	78-81	(N) ** 6/10	Jan. 27, 1995	W	76-66	(H) 5/5	Feb. 27, 1985 L 65-79 (H)			
Jan. 9, 1994	L	57-59	(A) 4/4 12/12	Feb. 26, 1995	W	74-71	(A) 3/3	Mar. 3, 1985 L 64-87 (A)			
Feb. 4, 1994	W	75-67	(H) 7/8 6/6	Jan. 7, 1996	W	64-58	(A) 13/10	Feb. 5, 1986 W 71-62 (A)			
Feb. 10, 1995	W	84-73	(H) 3/3 15/15	Feb. 4, 1996	W	54-50	(H) 16/14	Mar. 1, 1986 W 81-70 (N)			
Feb. 24, 1995	W	90-81	(A) * 3/3 24/23	Jan. 29, 1997	W	71-58	(H)	Mar. 8, 1986 L 63-75 (H)			
Mar. 6, 1995	W	61-45	(N) 3/3 23/22	Feb. 19, 1997	L	62-68	(A)	Jan. 24, 1987 W 94-91 (A) NR/21			
Jan. 5, 1996	W	60-59	(A) 13/10	Mar. 8, 1997	W	54-44	(N)	Feb. 21, 1987 L 66-73 (H)			
Feb. 3, 1996	L	57-67	(H) 16/14	Jan. 21, 1998	L	52-64	(A)	Feb. 28, 1987 L 77-92 (N)			
Mar. 4, 1996	W	75-47	(N) 19/19 20/22	Jan. 31, 1998	W	56-52	(H)	Feb. 3, 1988 L 69-71 (A)			
Jan. 25, 1997	L	58-61	(A) 15/15	Feb. 6, 1999	L	57-59	(H)	Feb. 24, 1988 W 101-88 (H)			
Feb. 15, 1997	L	60-72	(H) 14/14	Feb. 17, 1999	W	57-54	(A)	Mar. 6, 1988 W 84-80 (N)			
Feb. 4, 1998	L	45-65	(H)	Mar. 2, 1999	L	51-55	(N)	Jan. 25, 1989 W 75-67 (A) 18/21			
Feb. 18, 1998	L	51-67	(A)	Feb. 16, 2000	L	54-62	(H)	Feb. 8, 1989 W 86-73 (H) 15/15			
Jan. 20, 1999	W	76-65	(H) NR/23	Mar. 1, 2000	L	47-64	(A)	Mar. 5, 1989 W 83-67 (N) 10/12			
Feb. 3, 1999	L	57-65	(A) 22/20	Jan. 6, 2001	W	67-62	(A)	Jan. 24, 1990 L 52-64 (A)			
Jan. 15, 2000	L	56-78	(A) 21/23	Feb. 24, 2001	W	74-56	(H) 16/20	Feb. 7, 1990 L 55-58 (H)			
Feb. 1, 2000	L	66-74	(H) 25/24	Jan. 9, 2002	L	72-75	(A) 21/19 14/18	Jan. 23, 1991 W 74-71 (H) *			
Jan. 20, 2001	W	72-63	(H)	Feb. 23, 2002	W	79-58	(H) 11/13 12/12	Feb. 6, 1991 L 64-72 (A)			
Feb. 7, 2001	W	70-60	(A) 19/24	Jan. 11, 2003	L	36-61	(A) 24/23 4/4	Jan. 25, 1992 W 69-63 (H)			
Jan. 16, 2002	W	70-35	(A) 22/19	Mar. 1, 2003	L	59-67	(H) 5/5	Feb. 19, 1992 W 67-57 (A)			
Jan. 29, 2002	W	80-41	(H) 17/17	Jan. 10, 2004	L	69-76	(H) 14/14 11/12	Jan. 16, 1993 W 67-33 (A) 6/7			
Jan. 18, 2003	W	71-50	(A)	Feb. 8, 2004	L	53-79	(A) 11/10 10/11	Feb. 13, 1993 W 75-52 (H) 4/4			
Feb. 5, 2003	W	73-42	(H)	Jan. 29, 2005	L	70-81	(H) 16/16	Jan. 16, 1994 W 75-65 (H) 7/7			
Jan. 13, 2004	W	59-49	(A) 15/15	Feb. 19, 2005	L	51-73	(A) 18/17	Feb. 12, 1994 W 62-50 (A) 5/5			
Feb. 24, 2004	W	75-56	(H) 14/13	Jan. 14, 2006	L	66-85	(A)	Jan. 14, 1995 W 75-67 (A) 6/6			
Jan. 25, 2005	L	60-65	(H)	Feb. 8, 2006	L	62-67	(H)	Feb. 12, 1995 W 79-57 (H) 3/3			
Feb. 12, 2005	L	54-76	(A)	Jan. 31, 2007	W	66-55	(H)	Jan. 14, 1996 L 61-72 (A) 12/9			
Jan. 10, 2006	W	74-65	(H)	Feb. 14, 2007	W	60-58	(A)				
Feb. 1, 2006	W	77-71	(A)	Jan. 19, 2008	L	60-67	(A) 25/RV				
Feb. 6, 2007	L	68-70	(A) *	Feb. 23, 2008	W	73-68	(H) 15/15				
Feb. 24, 2007	W	59-50	(H)	Feb. 21, 2009	L	60-72	(A) 16/14				
Jan. 22, 2008	W	59-41	(H)	Mar. 7, 2009	L	61-71	(H) RV/21				
Feb. 13, 2008	L	59-70	(A)	Mar. 12, 2009	L	51-68	(N) 22/17				
Feb. 4, 2009	L	54-65	(A)	Jan. 20, 2010	W	63-57	(A)				
Feb. 18, 2009	W	69-62	(H)	Mar. 3, 2010	L	70-72	(H)				
Jan. 27, 2010	L	64-75	(A)	Jan. 26, 2011	L	59-72	(H)				
Feb. 16, 2010	L	72-79	(H)	Feb. 16, 2011	L	51-78	(A)				
Jan. 12, 2011	L	58-68	(H)	<b>LONG BEACH STATE (2-3)</b>							
Feb. 2, 2011	L	53-81	(A)	<i>(Home: 1-1, Away: 1-2)</i>							
Mar. 8, 2011	L	41-75	(N)	Jan. 7, 1981	L	55-77	(A) 18 4				
Mar. 23, 2013	L	52-67	(H) 19/19	Mar. 19, 1988	L	64-103	(A) 7/9				
<b>KANSAS STATE (33-35)</b>											
<i>(Home: 16-13, Away: 13-18, Neutral: 4-4)</i>											
Dec. 6, 1979	L	75-106	(A)	Jan. 2, 1994	W	79-55	(A) 5/6				
Jan. 19, 1980	L	69-81	(N)	Dec. 19, 1994	W	85-42	(H) 8/8				
Jan. 16, 1982	L	71-76	(A) 15	Dec. 30, 2014	L	56-62	(H)				
Jan. 15, 1983	L	59-75	(A) 13	<b>LOUISIANA STATE (2-2)</b>							
Feb. 19, 1983	W	84-67	(H) 8	<i>(Home: 1-1, Neutral: 1-1)</i>							
Mar. 11, 1983	L	63-97	(N) 14	Dec. 2, 1989	L	60-63	(N) 14/16				
Jan. 25, 1984	L	55-77	(H) 7	Dec. 29, 2001	W	86-65	(N) 18/15 21/22				
Feb. 16, 1984	L	67-94	(A) 12	Mar. 17, 2002	W	69-58	(H) 12/12 22/24				
Jan. 19, 1985	L	74-89	(H)	Nov. 27, 2004	L	44-75	(H) 2/2				
Feb. 23, 1985	L	60-75	(A)	<b>LOUISIANA TECH (1-3)</b>							
Jan. 18, 1986	L	55-67	(H)	<i>(Home: 1-1, Away: 0-2)</i>							
Feb. 8, 1986	W	69-57	(A)	Jan. 6, 1988	L	59-66	(A) 3/2				
				Jan. 3, 1989	W	61-60	(H) 2/2				





# ALL-TIME OPPONENT SERIES HISTORY

CU Ranking	Opp. Ranking	CU Ranking	Opp. Ranking	CU Ranking	Opp. Ranking	CU Ranking	Opp. Ranking	
Feb. 10, 1996 W	67-56 (H)	19/16	Dec. 20, 2008 W	71-49 (H)	Mar. 4, 1986 W	96-90 (H)	Mar. 7, 1979 W	79-77 (N)
Jan. 8, 1997 W	78-51 (H)		Nov. 18, 2012 W	78-55 (A)	Jan. 17, 1987 L	72-74 (A)	Nov. 23, 1983 W	79-66 (A)
Feb. 23, 1997 W	57-50 (A)		<b>MISSOURI STATE (3-0)</b>		Feb. 7, 1987 W	91-71 (H)	Nov. 28, 1984 W	71-69 (H)
Feb. 8, 1998 W	71-60 (A)		<i>(Home: 3-0)</i>		Jan. 30, 1988 W	84-69 (H)	Dec. 31, 1991 W	92-22 (H)
Feb. 25, 1998 W	78-65 (H)		Jan. 6, 1979 W	95-57 (H)	Feb. 20, 1988 L	73-85 (A)*	Dec. 1, 1992 W	86-37 (A) 25/24
Jan. 16, 1999 L	60-63 (A)		Mar. 17, 1995 W	78-34 (H) 2/3	Jan. 11, 1989 W	77-53 (H)	Nov. 11, 2001 W	78-63 (A) 12/13
Feb. 9, 1999 W	74-62 (H)		Nov. 28, 2014 W	87-59 (H)	Feb. 22, 1989 W	71-63 (A) 10/12	Dec. 29, 2012 W	84-39 (H) 23/RV
Feb. 12, 2000 L	57-65 (A)		<b>MONTANA (1-2)</b>		Jan. 17, 1990 W	81-57 (H)	Nov. 23, 2013 W	85-53 (A) 16/20
Feb. 26, 2000 W	72-64 (H)		<i>(Away: 0-1, Neutral: 1-1)</i>		Feb. 3, 1990 W	75-74 (A)	<b>NEW MEXICO STATE (10-2)</b>	
Mar. 7, 2000 W	83-68 (N)		Dec. 29, 1978 W	78-55 (N)	Jan. 19, 1991 L	53-68 (A)	<i>(Home: 5-0, Away: 5-2)</i>	
Jan. 14, 2001 W	98-90 (H)		Dec. 15, 1984 L	44-61 (A)	Feb. 9, 1991 W	82-69 (H)	Jan. 25, 1975 L	39-48 (A)
Feb. 28, 2001 L	61-78 (A)	17/21	Dec. 7, 1996 L	68-69 (N) 17/13	Jan. 15, 1992 L	69-75 (A)	Jan. 17, 1976 W	63-58 (H)
Mar. 7, 2001 W	83-72 (N)	20/21	<b>MONTANA STATE (5-0)</b>		Feb. 29, 1992 W	83-63 (H)	Feb. 24, 1977 L	64-77 (A)
Jan. 26, 2002 W	78-56 (A)	20/19	<i>(Home: 4-0, Away: 1-0)</i>		Mar. 8, 1992 W	74-66 (N)	Feb. 4, 1978 W	59-57 (A)*
Feb. 13, 2002 W	78-47 (H)	13/13	Feb. 20, 1980 W	94-72 (H)	Jan. 22, 1993 L	50-62 (A) 4/4	Feb. 9, 1979 W	87-67 (H)
Feb. 2, 2003 L	52-71 (A)		Jan. 4, 1982 W	62-43 (H) 13	Feb. 21, 1993 W	71-63 (H) 4/4 22/23	Feb. 7, 1980 W	108-82 (A)
Feb. 22, 2003 W	69-48 (H)		Dec. 21, 1986 W	75-69 (H)	Jan. 21, 1994 W	81-55 (H) 6/6	Feb. 16, 1980 W	106-75 (A)
Jan. 18, 2004 W	71-54 (H)	15/15	Dec. 21, 1994 W	74-53 (H) 9/9	Feb. 20, 1994 W	63-61 (A) 3/3	Jan. 22, 1981 W	95-59 (A)
Jan. 31, 2004 W	68-66 (A)	11/10	Dec. 22, 1995 W	68-55 (A) 9/6	Mar. 6, 1994 W	77-67 (N) 3/3	Feb. 5, 1981 W	79-41 (H)
Jan. 18, 2005 W	56-51 (A)		<b>NEBRASKA (41-28)</b>		Jan. 22, 1995 W	73-55 (A) 6/6	Feb. 4, 1982 W	87-64 (H)
Feb. 9, 2005 L	55-58 (H)		<i>(Home: 26-6, Away: 12-20, Neutral: 3-2)</i>		Feb. 17, 1995 W	89-76 (H) 3/3	Feb. 27, 1982 W	76-65 (A)
Jan. 18, 2006 L	49-69 (A)		Jan. 31, 1976 L	53-59 (A)	Jan. 21, 1996 W	69-61 (H) 15/11	Nov. 15, 1995 W	63-56 (H) 14/11
Feb. 18, 2006 L	57-72 (H)		Jan. 4, 1997 W	65-58 (A) 25/25	Feb. 14, 1996 L	75-83 (A)**18/16	<b>NEW SOUTH WALES (0-1)</b>	
Jan. 3, 2007 W	71-59 (H)		Feb. 5, 1997 W	73-52 (H)	Jan. 4, 1997 W	65-58 (A)	<i>(Home: 0-1)</i>	
Jan. 28, 2007 L	48-61 (A)		Nov. 6, 1976 L	80-81 (N)	Feb. 5, 1997 W	73-52 (H)	Dec. 10, 1976 L	55-103 (H)
Jan. 9, 2008 W	70-58 (A)	23/RV	Jan. 6, 1978 L	61-63 (A)	Jan. 7, 1998 W	84-78 (H) 16/16	<b>NORTH CAROLINA (1-0)</b>	
Mar. 5, 2008 W	63-47 (H)		Nov. 25, 1978 W	63-62 (H)	Feb. 22, 1998 L	53-78 (A) NR/23	<i>(Home: 1-0)</i>	
Jan. 24, 2009 W	61-56 (A)		Dec. 8, 1979 L	62-65 (A)	Jan. 6, 1999 L	49-90 (A) 20/19	Mar. 24, 2003 W	86-67 (H) 12/11
Feb. 28, 2009 L	55-66 (H)		Jan. 17, 1980 W	85-70 (N)	Jan. 23, 1999 W	70-53 (H) 23/20	<b>NORTH CAROLINA STATE (1-0)</b>	
Jan. 9, 2010 W	64-48 (H)		Dec. 10, 1981 W	87-66 (H)	Jan. 26, 2000 L	66-79 (A)	<i>(Home: 1-0)</i>	
Feb. 23, 2010 W	80-79 (A)*		Jan. 22, 1983 W	89-85 (H)	Feb. 9, 2000 W	78-75 (H)	Feb. 1, 1997 W	67-62 (H) 21/20
Jan. 22, 2011 W	58-48 (H)		Feb. 12, 1983 L	89-96 (A)	Jan. 24, 2001 W	87-69 (H) 25/RV	<b>NORTH DAKOTA (2-0)</b>	
Feb. 26, 2011 W	63-59 (A)		Jan. 28, 1984 L	77-91 (H)	Feb. 10, 2001 W	81-65 (A) 19/24	<i>(Home: 2-0)</i>	
Dec. 12, 2014 L	50-53 (A)		Feb. 25, 1984 L	67-92 (A)	Feb. 6, 2002 W	95-60 (H) 13/13	Jan. 4, 2011 W	67-56 (H)
<b>UMKC (4-0)</b>			Jan. 23, 1985 W	90-83 (A)	Feb. 26, 2002 W	84-60 (A) 11/12	Nov. 15, 2014 W	68-59 (H)
<i>(Home: 2-0, Away: 2-0)</i>			Feb. 13, 1985 L	60-85 (H)	Jan. 14, 2003 W	74-54 (H)	<b>NORTH DAKOTA STATE (1-0)</b>	
Dec. 14, 1988 W	60-49 (A)		Feb. 1, 1986 W	80-68 (H)	Mar. 5, 2003 W	70-56 (A)	<i>(Neutral: 1-0)</i>	
Dec. 6, 1989 W	79-64 (H)		Feb. 25, 1986 W	68-66 (A)	Feb. 4, 2004 W	78-63 (H) 11/10	Dec. 30, 1978 W	87-69 (N)
					Mar. 3, 2004 W	63-60 (A) 13/13	<b>NORTHERN ARIZONA (14-2)</b>	
					Jan. 5, 2005 L	62-84 (A)	<i>(Home: 8-0, Away: 6-0, Neutral: 0-2)</i>	
					Mar. 2, 2005 W	78-76 (H)	Feb. 13, 1976 W	79-36 (A)
					Jan. 4, 2006 L	62-80 (H)	Feb. 4, 1977 W	67-57 (H)
					Jan. 28, 2006 L	54-70 (A)	Jan. 21, 1978 W	89-48 (H)
					Mar. 7, 2006 L	59-67 (N)	Jan. 26, 1979 W	103-69 (A)
					Feb. 10, 2007 L	44-54 (H) 21/21	Jan. 21, 1980 W	129-47 (H)
					Feb. 27, 2007 L	70-90 (A)	Feb. 14, 1980 W	112-76 (A)
					Feb. 6, 2008 L	71-80 (H)	Jan. 24, 1981 W	79-47 (A)
					Mar. 2, 2008 L	55-63 (A)	Feb. 7, 1981 W	81-42 (H)
					Jan. 31, 2009 W	75-73 (H)	Feb. 6, 1982 W	96-48 (H)
					Mar. 3, 2009 L	64-75 (A)	Feb. 25, 1982 W	79-49 (A)
					Jan. 30, 2010 L	64-80 (H) 6/4	Nov. 25, 1983 W	62-60 (A)
					Feb. 20, 2010 L	73-89 (A) 3/3	Nov. 28, 1986 L	61-63 (N)
					Feb. 6, 2011 W	70-45 (H)	Dec. 30, 1990 W	79-45 (A)
					Mar. 2, 2011 W	64-61 (A)	Dec. 18, 1993 W	78-46 (H) 7/7
					<b>NEVADA (1-1)</b>		Dec. 19, 2005 L	83-84 (N)*
					<i>(Home: 1-0, Away: 0-1)</i>		Nov. 11, 2011 W	84-60 (H)
					Nov. 20, 2004 L	59-69 (A)	<b>NORTHERN COLORADO (10-6)</b>	
					Nov. 24, 2006 W	80-60 (H)	<i>(Home: 7-3, Away: 2-3, Neutral: 1-0)</i>	
					<b>UNLV (0-5)</b>		Jan. 28, 1975 L	37-68 (H)
					<i>(Home: 0-3, Away: 0-2)</i>		Mar. 1, 1975 L	54-66 (A)
					Jan. 9, 1976 L	48-121 (H)	Jan. 7, 1976 L	59-60 (H)
					Jan. 13, 1978 L	36-103 (A)	Feb. 21, 1976 L	55-81 (A)
					Jan. 12, 1984 L	41-67 (A)	Jan. 10, 1977 W	58-57 (A)
					Dec. 29, 1984 L	60-77 (H)	Feb. 12, 1977 L	52-55 (H)
					Mar. 18, 1989 L	74-84 (H) 9/11 16/17	Nov. 22, 1977 W	62-53 (H)
					<b>NEW MEXICO (8-6)</b>		Nov. 29, 1977 W	67-56 (N)
					<i>(Home: 3-3, Away: 4-3, Neutral: 1-0)</i>		Jan. 27, 1978 L	53-59 (A)
					Jan. 25, 1975 L	38-55 (A)	Dec. 1, 1978 W	87-68 (A)
					Jan. 16, 1976 L	63-66 (H)	Feb. 1, 1979 W	87-62 (H)
					Feb. 26, 1977 L	57-74 (A)	Nov. 26, 1985 W	91-50 (H)
					Nov. 25, 1977 L	64-77 (H)		
					Feb. 17, 1978 L	65-72 (H)		
					Feb. 24, 1979 L	73-93 (A)		





# ALL-TIME OPPONENT SERIES HISTORY

CU Ranking	Opp. Ranking	CU Ranking	Opp. Ranking
Dec. 29, 2004	W 77-58 (H)	Jan. 9, 1999	W 63-62 (H)
Feb. 13, 2006	W 92-65 (H)	Jan. 22, 2000	L 73-76 (A) 25/NR
Nov. 28, 2007	W 69-60 (H)	Jan. 3, 2001	L 69-89 (H) 19/16
Mar. 14, 2012	W 54-42 (H)	Mar. 8, 2001	L 93-102 (N) 20/21 7/7
<b>NORTHERN ILLINOIS (1-0)</b>		Jan. 2, 2002	L 67-78 (A) 16/14 3/3
<i>(Neutral: 1-0)</i>		Mar. 25, 2002	L 60-94 (N) 12/12 2/2
Dec. 2, 1994	W 78-49 (N) 10/8	Feb. 15, 2003	W 61-57 (H) NR/20
<b>NORTHERN IOWA (0-1)</b>		Mar. 12, 2003	W 73-68 (N)
<i>(Home: 0-1)</i>		Feb. 18, 2004	L 58-78 (A) 13/13 24/22
Nov. 25, 2005	L 65-74 (H) *	Mar. 10, 2004	L 56-63 (N) 13/13 19/20
<b>NORTHERN STATE (1-0)</b>		Feb. 16, 2005	L 61-77 (H)
<i>(Neutral: 1-0)</i>		Jan. 7, 2006	L 61-84 (A) 18/16
Dec. 29, 1977	W 99-73 (N)	Jan. 20, 2007	L 67-82 (H) 7/6
<b>NORTHWESTERN (La.) STATE (1-0)</b>		Feb. 9, 2008	L 66-82 (A) 10/10
<i>(Neutral: 1-0)</i>		Jan. 21, 2009	L 58-72 (H) 3/2
Dec. 29, 1995	W 71-62 (N) 10/6	Feb. 13, 2010	L 55-65 (A) 12/12
<b>NOTRE DAME (3-0)</b>		Feb. 23, 2011	W 73-68 (H) 16/15
<i>(Home: 1-0, Neutral: 2-0)</i>		<b>OKLAHOMA CITY (1-0)</b>	
Dec. 6, 1986	W 76-53 (N)	<i>(Neutral: 1-0)</i>	
Dec. 27, 1994	W 91-70 (N) 9/8	Jan. 9, 1982	W 68-41 (N) 13
Nov. 15, 2003	W 67-63 (H) * 20/20 15/16	<b>OKLAHOMA STATE (26-26)</b>	
<b>OAKLAND (1-0)</b>		<i>(Home: 12-10, Away: 8-14, Neutral: 6-2)</i>	
<i>(Neutral: 1-0)</i>		Jan. 21, 1977	W 85-75 (H)
Dec. 30, 2000	W 74-60 (N)	Jan. 7, 1978	L 69-75 (N)
<b>OHIO STATE (0-3)</b>		Jan. 20, 1979	L 49-64 (N)
<i>(Home: 0-1, Away: 0-1, Neutral: 0-1)</i>		Jan. 16, 1981	W 80-49 (N)
Jan. 2, 1980	L 74-75 (A)	Jan. 28, 1983	W 73-55 (A)
Dec. 5, 1986	L 64-87 (N) 15/14	Feb. 5, 1983	W 76-56 (H)
Dec. 28, 1988	L 67-72 (H)	Jan. 21, 1984	L 63-72 (A)
<b>OKLAHOMA (34-22)</b>		Feb. 11, 1984	L 76-77 (H)
<i>(Home: 17-6, Away: 10-13, Neutral: 7-3)</i>		Jan. 16, 1985	L 71-76 (A)
Dec. 7, 1978	L 66-68 (A)	Feb. 16, 1985	L 74-84 (H)
Jan. 19, 1979	W 78-62 (N)	Jan. 25, 1986	L 68-76 (H)
Dec. 3, 1979	W 90-77 (H)	Feb. 22, 1986	W 68-62 (A)
Jan. 14, 1982	W 71-61 (N) 15	Jan. 10, 1987	L 81-83 (H)
Jan. 29, 1983	L 79-90 (A)	Feb. 4, 1987	L 78-81 (A)
Feb. 26, 1983	W 89-82 (H)	Jan. 16, 1988	L 63-75 (A)
Mar. 10, 1983	W 78-70 (A)	Feb. 13, 1988	W 78-64 (H)
Jan. 18, 1984	W 66-62 (H)	Mar. 3, 1988	W 79-68 (N) 16/18
Feb. 18, 1984	L 78-88 (A)	Feb. 1, 1989	W 85-58 (H) 15/15
Jan. 29, 1985	L 65-73 (H)	Feb. 11, 1989	W 76-59 (A) 9/12
Feb. 20, 1985	L 58-80 (A) 19/21	Mar. 6, 1989	W 98-92 (N) **
Jan. 15, 1986	W 91-84 (H) NR/21	Jan. 28, 1990	L 55-63 (A) 12/13
Feb. 15, 1986	L 69-82 (A) 11/12	Feb. 25, 1990	W 84-65 (H)
Jan. 27, 1987	W 94-80 (H) 17/17	Jan. 30, 1991	L 72-90 (A) 25/24
Feb. 18, 1987	W 74-73 (A) NR/23	Feb. 23, 1991	W 65-63 (H)
Jan. 13, 1988	L 78-82 (H)	Jan. 22, 1992	L 70-82 (H)
Feb. 27, 1988	W 91-88 (A) *	Feb. 15, 1992	W 61-54 (A)
Jan. 27, 1989	W 73-70 (A) 18/21	Jan. 31, 1993	W 78-76 (H) 7/7 21/19
Feb. 18, 1989	W 87-76 (H) 15/15	Feb. 26, 1993	W 49-48 (A) 4/5 22/21
Mar. 4, 1989	W 80-61 (N) 10/12	Jan. 30, 1994	L 73-75 (A) * 3/4
Jan. 10, 1990	W 56-48 (A)	Feb. 25, 1994	W 69-59 (H) 3/3
Feb. 18, 1990	W 86-49 (H)	Jan. 6, 1995	W 71-52 (H) 7/6 NR/25
Jan. 16, 1991	W 68-51 (A)	Feb. 5, 1995	W 69-52 (A) 4/4
Feb. 3, 1991	W 76-55 (H)	Mar. 5, 1995	W 76-58 (N) 3/3
Mar. 2, 1991	W 80-75 (N)	Jan. 26, 1996	L 46-50 (A) 16/11 24/22
Feb. 1, 1992	W 63-55 (A)	Feb. 25, 1996	L 49-69 (H) 20/18
Feb. 22, 1992	W 86-63 (H)	Mar. 3, 1996	W 69-59 (N) 20/19
Jan. 29, 1993	W 80-49 (H) 7/7	Jan. 15, 1997	L 60-68 (A)
Feb. 28, 1993	L 69-74 (A) 4/5	Feb. 14, 1998	L 67-72 (H)
Jan. 28, 1994	W 79-74 (A) 3/4	Jan. 28, 1999	W 62-58 (A)
Feb. 27, 1994	W 89-79 (H) 3/3	Jan. 29, 2000	L 72-75 (H)
Jan. 8, 1995	W 83-59 (H) 7/6	Jan. 10, 2001	W 65-49 (A)
Feb. 3, 1995	W 69-64 (A) 4/4 25/NR	Jan. 12, 2002	W 79-57 (H) 21/19
Jan. 28, 1996	W 68-53 (A) 16/11	Jan. 22, 2003	W 64-50 (A)
Feb. 23, 1996	W 83-68 (H) 20/18	Feb. 21, 2004	L 72-57 (H) 13/13
Mar. 2, 1996	W 76-60 (N) 20/19	Jan. 22, 2005	L 70-76 (A) *
Feb. 12, 1997	W 61-42 (H)	Feb. 26, 2006	W 73-62 (H)
Jan. 28, 1998	L 58-61 (A)	Jan. 24, 2007	L 58-61 (A)
Mar. 3, 1998	W 71-66 (N)	Feb. 2, 2008	L 72-81 (H) 21/18
		Jan. 14, 2009	L 43-79 (A) 22/22
		Jan. 24, 2010	L 63-74 (H) 12/17
		Jan. 18, 2011	L 49-58 (A)
		Mar. 25, 2012	L 70-78 (A)



CU Ranking	Opp. Ranking	CU Ranking	Opp. Ranking
<b>OLD DOMINION (1-1)</b>		<b>PACIFIC (2-0)</b>	
<i>(Home: 1-0, Neutral: 0-1)</i>		<i>(Home: 1-0, Away: 1-0)</i>	
Dec. 30, 1995	L 65-77 (N) 10/6 19/20	Dec. 18, 2004	W 45-42 (A)
Nov. 14, 2003	W 84-67 (H) 20/20	Dec. 8, 2005	W 84-57 (H)
<b>ORAL ROBERTS (1-0)</b>		<b>PACIFIC CHRISTIAN (1-0)</b>	
<i>(Home: 1-0)</i>		<i>(Home: 1-0)</i>	
Nov 9, 2001	W 78-49 (H) 12/13	Nov. 18, 1981	W 108-43 (H)
<b>OREGON (7-10)</b>		<b>PENN STATE (0-2)</b>	
<i>(Home: 3-4, Away: 2-4, Neutral: 2-2)</i>		<i>(Home: 2-0)</i>	
Mar. 18, 1981	L 67-74 (A) 17 14	Jan. 3, 1987	W 84-38 (H)
Dec. 5, 1981	W 69-68 (N) 13	Nov. 26, 2004	W 69-49 (H)
Dec. 19, 1982	L 58-73 (N)	<b>PENN STATE (0-2)</b>	
Dec. 3, 1983	L 71-82 (H)	<i>(Away: 0-1, Neutral: 0-1)</i>	
Dec. 28, 1986	L 75-81 (A)	Jan. 12, 1980	L 72-75 (A)
Dec. 2, 1988	W 62-51 (N)	Dec. 2, 1995	L 57-76 (N) 8/8 12/12
Mar. 19, 1994	W 92-71 (H) 5/5	<b>PEPPERDINE (3-0)</b>	
Nov. 24, 1998	L 63-75 (H)	<i>(Home: 1-0, Away: 1-0; Neutral 1-0)</i>	
Dec. 4, 1999	L 58-90 (A) 13/15	Jan. 6, 1981	W 71-67 (A) 18
Dec. 30, 2005	L 64-72 (H)	Jan. 4, 2008	W 65-53 (H) 23/RV
Dec. 9, 2006	L 60-70 (N)	Jan. 3, 2009	W 63-55 (N)
Feb. 4, 2012	L 62-67 (A)	<b>PERU STATE (1-0)</b>	
Mar. 1, 2012	L 62-64 (H)	<i>(Neutral: 1-0)</i>	
Feb. 10, 2013	W 84-59 (H) 21/25	Dec. 28, 1977	W 88-35 (N)
Mar. 1, 2013	W 60-49 (A) 19/19	<b>PHILLIPS (0-1)</b>	
Feb. 10, 2014	W 81-75 (A)	<i>(Neutral: 0-1)</i>	
Feb. 22, 2015	W 84-69 (H)	Dec. 4, 1977	L 73-76 (N)
<b>OREGON STATE (6-3)</b>		<b>PORTLAND STATE (0-1)</b>	
<i>(Home: 4-1, Away: 1-2, Neutral: 1-0)</i>		<i>(Away: 0-1)</i>	
Dec. 7, 1987	W 82-60 (H)	Dec. 20, 1982	L 55-57 (A)
Dec. 19, 1999	W 68-60 (H)	<b>PROVIDENCE (1-1)</b>	
Feb. 2, 2012	L 45-65 (A)	<i>(Home: 1-0, Away: 0-1)</i>	
Mar. 3, 2012	W 67-57 (H)	Nov. 25, 1989	W 78-70 (H)
Feb. 8, 2013	W 61-47 (H) 21/25	Dec. 2, 1990	L 90-91 (A)
Mar. 3, 2013	W 66-63 (A) * 19/19		
Feb. 8, 2014	L 63-75 (A)		
Feb. 20, 2015	L 44-66 (H) 7/8		
Mar. 6, 2015	W 68-65 (N) 8/9		



# ALL-TIME OPPONENT SERIES HISTORY



CU Ranking	Opp. Ranking	CU Ranking	Opp. Ranking
<b>PUERTO RICO-MAYAGUEZ (1-0)</b> (Neutral: 1-0) Dec. 20, 2005 W 90-42 (N)			
<b>PURDUE (2-0)</b> (Home: 1-0, Neutral: 1-0) Dec. 3, 1987 W 79-55 (H) Dec. 3, 1995 W 79-64 (N) 8/8 7/5			
<b>REDLANDS (1-0)</b> (Away: 1-0) Jan. 14, 1978 W 107-49 (A)			
<b>REGIS (1-0)</b> (Home: 1-0) Nov. 12, 2010 W 76-38 (H)			
<b>RICE (4-0)</b> (Home: 4-0) Nov. 30, 1997 W 53-49 (H) 16/17 Nov. 22, 2002 W 85-66 (H) Nov. 24, 2007 W 72-55 (H) Nov. 30, 2013 W 75-58 (H) 14/19			
<b>RUTGERS (1-0)</b> (Away: 1-0) Dec. 28, 1993 W 79-47 (A) 5/6			
<b>ST. FRANCIS (Ind.) (1-0)</b> (Home: 1-0) Jan. 3, 1981 W 94-54 (H) 19			
<b>ST. FRANCIS (Pa.) (1-0)</b> (Home: 1-0) Nov. 28, 1994 W 114-52 (H) 11/8			
<b>ST. JOHN'S (1-0)</b> (Neutral: 1-0) Nov. 28, 1987 W 79-62 (N)			
<b>ST. JOSEPH'S (1-0)</b> (Away: 1-0) Jan. 9, 1980 W 77-67 (A)			
<b>SAINT LOUIS (1-0)</b> (Home: 1-0) Dec. 22, 2008 W 76-63 (H)			
<b>ST. MARY'S (KAN.) (3-0)</b> (Home: 2-0, Away: 1-0) Nov. 18, 1976 W 80-56 (H) Nov. 26, 1977 W 71-62 (H)			
Dec. 3, 1977 W 79-76 (A)*			
<b>SAM HOUSTON STATE (1-0)</b> (Home: 1-0) Dec. 14, 2000 W 99-60 (H)			
<b>SAN DIEGO (3-0)</b> (Home: 2-0, Away: 1-0) Jan. 6, 1990 W 78-46 (H) Dec. 28, 1990 W 77-75 (A) Nov. 20, 2001 W 83-44 (H) 14/12			
<b>SAN DIEGO STATE (2-1)</b> (Home: 2-0, Away: 0-1) Jan. 9, 1981 L 55-71 (A) 18 Nov. 26, 1994 W 70-51 (H) 11/10 Nov. 24, 2012 W 67-53 (H) RV/--			
<b>SAN FRANCISCO (4-2)</b> (Home: 2-1, Away: 2-1) Jan. 5, 1985 L 65-75 (A) Dec. 10, 1995 W 66-56 (A) 8/6 Dec. 11, 1996 L 51-52 (H) 21/20 Nov. 10, 2006 W 62-56 (H) Nov. 16, 2007 W 66-48 (A) Nov. 30, 2011 W 84-66 (H)			
<b>SAN JOSE STATE (2-0)</b> (Home: 2-0) Dec. 22, 2009 W 86-50 (H) Dec. 5, 2014 W 97-89 (H)*			
<b>SANTA CLARA (2-0)</b> (Home: 1-0, Neutral: 1-0) Dec. 19, 1987 W 60-49 (N) Nov. 19, 2010 W 71-57 (H)			
<b>SETON HALL (1-1)</b> (Home: 1-0, Away: 0-1) Dec. 9, 2008 L 40-77 (A) Dec. 6, 2009 W 80-54 (H)			
<b>SIENA (1-1)</b> (Home: 0-1, Neutral: 1-0) Mar. 17, 2001 W 98-78 (N) 20/21 Nov. 23, 2007 L 73-84 (H)			
<b>SIMPSON (1-0)</b> (Away: 1-0) Nov. 27, 1976 W 73-68 (A)			

CU Ranking	Opp. Ranking	CU Ranking	Opp. Ranking
<b>SOUTH ALABAMA (1-0)</b> (Home: 1-0) Nov. 29, 2013 W 94-61 (H) 14/19			
<b>SOUTH DAKOTA (1-0)</b> (Away: 1-0) Mar. 19, 2012 W 64-55 (A)			
<b>SOUTH DAKOTA STATE (1-1)</b> (Home: 1-0, Away: 0-1) Dec. 28, 2005 W 64-50 (H) Dec. 13, 2006 L 58-80 (A)			
<b>SOUTH FLORIDA (0-1)</b> (Neutral: 0-1) Dec. 21, 2005 L 59-72 (N)			
<b>SOUTHERN (1-0)</b> (Home: 1-0) Mar. 15, 2002 W 88-61 (H) 12/12			
<b>SOUTHERN CALIFORNIA (5-8)</b> (Home: 2-4, Away: 2-4, Neutral: 1-0) Dec. 21, 2002 W 93-86 (H) Dec. 20, 2003 W 69-67 (A) 14/13 Dec. 2, 2006 L 57-76 (H) Nov. 18, 2007 L 57-70 (A) Dec. 18, 2010 L 54-68 (A) Mar. 27, 2011 L 70-87 (H) Jan. 26, 2012 W 69-67 (H) Feb. 3, 2013 W 65-49 (A) 22/23 Jan. 3, 2014 L 45-55 (A) 12/14 Mar. 2, 2014 L 59-66 (H) Jan. 9, 2015 L 61-81 (H) Feb. 8, 2015 L 51-66 (A) Mar. 5, 2015 W 75-63 (N)			
<b>SOUTHERN ILLINOIS (3-1)</b> (Home: 2-1, Away: 1-0) Mar. 18, 1992 L 80-84 (H)* 24/25 Dec. 5, 1992 W 64-52 (H) 25/24 Dec. 21, 1997 W 62-57 (A) 21/22 Dec. 20, 1998 W 79-51 (H)			
<b>SOUTHERN UTAH (4-0)</b> (Home: 4-0) Dec. 28, 2007 W 81-38 (H) 25/RV Dec. 19, 2009 W 88-36 (H) Dec. 29, 2013 W 75-59 (H) 12/14 Mar. 22, 2014 W 79-68 (H)			
<b>SMU (1-0)</b> (Home: 1-0) Nov. 30, 1996 W 74-56 (H) 18/13			
<b>SOUTHWEST LOUISIANA (1-0)</b> (Neutral: 1-0) Dec. 5, 1993 W 73-50 (N) 11/12			
<b>SPORTSMEN OF IOWA (1-0)</b> (Neutral: 1-0) Nov. 26, 1976 W 73-58 (N)			
<b>STANFORD (4-13)</b> (Home: 2-4, Away: 0-7, Neutral: 2-2) Dec. 9, 1988 L 75-106 (A) 20/25 5/5 Dec. 6, 1990 W 71-66 (H) 7/7 Mar. 25, 1993 W 80-67 (N) 10/10 6/5 Mar. 24, 1994 L 62-78 (A) 5/5 11/10 Dec. 28, 1996 L 48-64 (H) 3/2 Dec. 28, 1997 L 73-87 (A) 18/20 17/17 Dec. 28, 1998 W 75-64 (H) Jan. 2, 2000 L 48-83 (A) Mar. 23, 2002 W 62-59 (N) 12/12 5/5 Jan. 14, 2012 L 54-80 (H) 4/4 Feb. 23, 2012 L 46-68 (A) 2/2 Jan. 4, 2013 L 40-57 (H) 20/25 4/3 Jan. 27, 2013 L 56-69 (A) 20/23 6/6 Mar. 9, 2013 L 47-61 (N) 18/18 4/4 Jan. 12, 2014 L 77-87 (H) 17/18 4/4			
Mar. 7, 2014 L 54-69 (N) 4/3 Jan. 3, 2015 L 55-62 (A) 15/15			
<b>STEPHEN F. AUSTIN (3-0)</b> (Home: 2-0, Away: 1-0) Dec. 4, 1993 W 81-62 (A) 11/12 16/15 Nov. 25, 1994 W 72-48 (H) 11/10 Mar. 16, 1997 W 66-57 (H) 18/21 19/17			
<b>SYRACUSE (2-1)</b> (Home: 1-0, Away: 1-0, Neutral: 0-1) Dec. 3, 1989 L 58-61 (N) Dec. 31, 2002 W 78-75 (A)* 25/25 Dec. 30, 2003 W 80-45 (H) 13/13			
<b>TEMPLE (1-0)</b> (Neutral: 1-0) Jan. 2, 1993 W 64-35 (N) 10/10			
<b>TEMPLE JUNIOR COLLEGE (0-1)</b> (Home: 0-1) Nov. 20, 1976 L 71-76 (H)			
<b>TENNESSEE (1-3)</b> (Home: 1-1, Away: 0-1, Neutral: 0-1) Dec. 8, 1981 W 78-60 (H) 10 Dec. 20, 1993 L 82-86 (A)* 7/7 1/1 Dec. 17, 1994 L 72-78 (H) 8/8 1/1 Mar. 22, 1997 L 67-75 (N) 18/21 10/11			
<b>TENNESSEE-MARTIN (1-0)</b> (Home: 1-0) Nov. 21, 2010 W 78-67 (H)			
<b>TEXAS (4-16)</b> (Home: 2-6, Away: 1-8, Neutral: 1-2) Jan. 7, 1982 L 52-75 (N) 13 Dec. 28, 1989 L 67-90 (A) 5/5 Dec. 9, 1990 L 64-93 (H) 20/20 Feb. 26, 1997 W 60-56 (A) 12/12 Mar. 6, 1997 W 64-50 (N) 12/13 Feb. 28, 1998 L 71-75 (H) Jan. 2, 1999 L 65-83 (A) Feb. 19, 2000 W 79-75 (H) Jan. 31, 2001 L 62-65 (A) 23/RV 21/20 Jan. 6, 2002 L 68-70 (H) 16/14 21/20 Feb. 19, 2003 L 55-75 (A) 10/11 Mar. 13, 2003 L 47-62 (N) 5/7 Feb. 14, 2004 L 45-51 (H) 12/12 1/2 Feb. 23, 2005 L 40-83 (A) 13/13 Feb. 4, 2006 L 64-69 (H) Jan. 13, 2007 L 49-68 (A) 23/RV Feb. 16, 2008 W 67-52 (H) Jan. 17, 2009 L 32-62 (A) 16/17 Feb. 10, 2010 L 50-74 (H) 14/19 Jan. 30, 2011 L 50-67 (A)			
<b>TEXAS A&amp;M (10-9)</b> (Home: 6-3, Away: 4-5, Neutral: 0-1) Jan. 6, 1992 L 60-69 (A) Dec. 31, 1992 W 92-51 (H) 10/10 Nov. 19, 1995 W 74-68 (H) 14/11 Feb. 8, 1997 W 69-40 (A) Jan. 24, 1998 W 72-64 (H) Feb. 27, 1999 W 71-69 (A)* Jan. 18, 2000 W 62-47 (H) Feb. 17, 2001 W 67-54 (A) 19/21 Jan. 19, 2002 W 88-70 (H) 22/19 Feb. 8, 2003 W 55-49 (A) Jan. 21, 2004 W 70-58 (H) 14/14 Feb. 5, 2005 L 62-72 (A) Jan. 24, 2006 L 46-55 (H) Jan. 18, 2007 L 58-74 (A) 17/18 Mar. 7, 2007 L 45-62 (N) 13/15 Jan. 16, 2008 L 68-72 (H) 25/RV 19/16 Feb. 14, 2009 L 50-79 (A) 12/8 Feb. 27, 2010 L 61-95 (H) 12/15 Jan. 8, 2011 L 57-85 (A) 7/5			

## ALL-TIME OPPONENT SERIES HISTORY



CU Ranking	Opp. Ranking	CU Ranking	Opp. Ranking	CU Ranking	Opp. Ranking	CU Ranking	Opp. Ranking				
<b>TEXAS A&amp;M-CORPUS CHRISTI (2-0)</b> (Home: 1-0, Away: 1-0) Nov. 16, 2011 W 71-58 (A) Nov. 23, 2012 W 75-48 (H)		<b>UTAH (14-12)</b> (Home: 8-2, Away: 3-8, Neutral: 3-1) Feb. 14, 1975 L 48-68 (A) Feb. 5, 1976 L 55-61 (H) Jan. 28, 1977 L 39-62 (A) Feb. 25, 1978 L 70-81 (H) Mar. 1, 1979 L 83-97 (A) Mar. 9, 1979 L 79-82 (N) Dec. 10, 1980 W 83-49 (H) Feb. 13, 1981 L 75-84 (A) Mar. 7, 1981 W 75-61 (N) Nov. 28, 1981 W 77-63 (H) Jan. 23, 1982 L 62-65 (A) 16 Nov. 26, 1982 W 61-46 (H) Dec. 5, 1983 L 60-88 (A) Jan. 7, 1989 W 79-61 (H) Dec. 7, 1991 W 69-45 (N) Jan. 4, 1990 L 46-58 (A) Nov. 17, 1995 W 63-61 (H) 14/11 Dec. 31, 2011 W 58-52 (A) Feb. 2, 2012 L 56-61 (H) * Mar. 7, 2012 W 55-41 (N) Jan. 8, 2013 W 67-57 (H) 23/RV Jan. 13, 2013 W 56-43 (A) 23/RV Jan. 29, 2014 L 55-58 (A) --/RV Feb. 2, 2014 W 61-45 (H) --/RV Jan. 14, 2015 W 77-72 (H) * Jan. 18, 2015 W 73-54 (A)		<b>VIRGINIA (0-3)</b> (Home: 0-1, Away: 0-2) Jan. 7, 1980 L 63-65 (A) Nov. 24, 2008 L 43-77 (A) 16/15 Jan. 2, 2010 L 59-74 (H) 23/21		<b>WASHINGTON (8-7)</b> (Home: 3-3, Away: 2-4, Neutral: 3-0) Dec. 21, 1982 W 67-65 (N) Nov. 24, 1990 L 60-87 (H) 14/15 Dec. 28, 1991 L 53-58 (A) 15/15 Nov. 27, 1993 W 76-65 (H) 12/13 Dec. 28, 1994 W 55-51 (A) 9/8 13/11 Dec. 1, 1995 W 64-53 (N) 8/8 Dec. 9, 2003 W 78-64 (H) 17/14 RV/23 Dec. 21, 2004 W 76-74 (A) * Jan. 5, 2012 L 67-75 (A) Feb. 24, 2013 W 68-61 (H) 20/23 RV/-- Mar. 8, 2013 W 70-59 (N) 18/18 Jan. 19, 2014 L 71-81 (A) 21/20 Feb. 14, 2014 L 80-87 (H) Jan. 23, 2015 L 82-85 (A) RV/RV Feb. 15, 2015 L 67-79 (H) RV/RV		<b>WICHITA STATE (2-0)</b> (Home: 1-0, Away: 1-0) Nov. 27, 1990 W 89-52 (A) Nov. 22, 1991 W 82-55 (H)		<b>WINNIPEG (1-0)</b> (Home: 1-0) Dec. 8, 1980 W 86-39 (H)	
<b>TEXAS CHRISTIAN (4-0)</b> (Home: 3-0, Away: 1-0) Dec. 7, 1993 W 101-56 (A) 9/10 Nov. 28, 1995 W 96-48 (H) 8/8 Mar. 30, 2008 W 96-90 (H) * Mar. 19, 2014 W 78-71 (H)		<b>UTAH STATE (11-5)</b> (Home: 7-3, Away: 4-2) Jan. 18, 1975 L 44-50 (H) Feb. 28, 1976 L 53-71 (H) Feb. 19, 1977 L 71-92 (H) Feb. 11, 1978 L 67-81 (A) Dec. 11, 1978 L 81-88 (A) Feb. 16, 1979 W 101-96 (H) Feb. 2, 1980 W 107-90 (A) Mar. 1, 1980 W 109-89 (H) Jan. 28, 1981 W 103-40 (H) Feb. 20, 1981 W 91-76 (A) Jan. 21, 1982 W 83-74 (A) * 16 Feb. 10, 1982 W 70-53 (H) Jan. 11, 1983 W 92-57 (H) Jan. 6, 1986 W 86-63 (A) Dec. 13, 1986 W 100-27 (H) Nov. 26, 2005 W 73-56 (H)		<b>WASHINGTON STATE (4-4)</b> (Home: 3-1, Away: 1-3) Jan. 8, 1985 W 84-70 (H) Dec. 5, 1998 L 76-81 (A) Jan. 7, 2012 W 57-56 (A) Feb. 22, 2013 W 59-45 (H) 20/23 Jan. 17, 2014 L 60-70 (A) 21/20 Feb. 16, 2014 L 77-80 (H) Jan. 25, 2015 L 68-73 (A) Feb. 13, 2015 W 72-51 (H)		<b>WISCONSIN (1-1)</b> (Home: 1-0, Neutral: 0-1) Mar. 21, 1982 L 59-60 (N) Nov. 26, 2011 W 58-48 (H)		<b>WRIGHT STATE (1-0)</b> (Home: 1-0) Nov. 26, 1999 W 76-49 (H)			
<b>UTEP (5-1)</b> (Home: 3-0, Away: 2-1) Feb. 6, 1976 W 67-39 (H) Feb. 25, 1977 W 71-68 (A) Feb. 3, 1978 W 58-50 (A) Feb. 10, 1979 W 109-42 (H) Nov. 19, 1982 W 76-45 (H) Mar. 28, 2014 L 60-68 (A)		<b>WAYLAND BAPTIST (0-2)</b> (Home: 0-1, Away: 0-1) Jan. 25, 1980 L 68-76 (H) Nov. 14, 1981 L 56-70 (A)		<b>WYOMING (37-9)</b> (Home: 22-2, Away: 15-7) Feb. 28, 1975 L 45-60 (A) Dec. 4, 1975 L 57-59 (A) Feb. 20, 1976 L 45-52 (H) Nov. 19, 1976 W 57-56 (H) Jan. 7, 1977 W 61-41 (H) Feb. 10, 1977 L 57-63 (A) Dec. 7, 1977 W 69-62 (H) Mar. 4, 1978 L 58-62 (A) Dec. 20, 1978 W 83-66 (A) Jan. 15, 1979 W 84-60 (H) Dec. 1, 1979 W 90-82 (H) Nov. 26, 1980 W 86-59 (H) Feb. 23, 1981 W 90-64 (A) Nov. 30, 1981 W 82-66 (A) Feb. 17, 1982 W 69-47 (H) Jan. 8, 1983 W 67-63 (A) Jan. 24, 1983 W 78-52 (H) Dec. 1, 1983 W 57-56 (A) Jan. 5, 1984 W 73-55 (H) Dec. 10, 1984 W 92-58 (H) Dec. 3, 1985 W 65-60 (A) Dec. 2, 1986 W 80-57 (H) Dec. 1, 1987 W 76-60 (A) Dec. 6, 1988 W 82-57 (H) 20/25 Dec. 13, 1989 L 63-67 (A) Dec. 12, 1990 W 76-46 (H) Dec. 11, 1991 W 68-66 (A) Dec. 29, 1992 W 72-56 (H) 10/10 Dec. 7, 1994 W 78-59 (A) 10/8 Dec. 7, 1995 W 70-48 (H) 8/6 Dec. 4, 1996 W 58-44 (A) 17/13 Dec. 10, 1997 W 79-57 (H) 21/21 Dec. 9, 1998 W 70-50 (A) Dec. 8, 1999 W 78-59 (H) Nov. 29, 2000 W 78-70 (A) Dec. 12, 2001 W 81-57 (H) 13/12 Dec. 4, 2002 W 73-62 (A) Dec. 28, 2003 W 71-39 (H) 13/13 Dec. 1, 2004 L 67-72 (A) Nov. 21, 2005 L 50-66 (H) Nov. 21, 2006 L 49-68 (A) Dec. 5, 2007 W 69-55 (H) 21/22 Mar. 24, 2011 W 70-58 (H) Nov. 28, 2012 W 68-59 (H) Dec. 4, 2013 W 63-59 (A) 11/17 Dec. 21, 2014 W 76-71 (H)							
<b>TEXAS-PAN AMERICAN (1-0)</b> (Neutral: 1-0) Dec. 20, 2011 W 67-49 (N)		<b>TEXAS SOUTHERN (1-0)</b> (Home: 1-0) Dec. 14, 2007 W 64-29 (H)		<b>WAYNE STATE (1-0)</b> (Neutral: 1-0) Dec. 30, 1977 W 57-47 (N)		<b>WEBER STATE (11-7)</b> (Home: 9-2, Away: 1-4, Neutral: 1-1) Jan. 17, 1975 W 57-54 (H) Feb. 27, 1976 L 64-66 (H) Feb. 18, 1977 L 71-77 (H) Feb. 10, 1978 L 75-89 (A) Dec. 28, 1978 L 77-92 (N) Feb. 17, 1979 W 99-93 (H) Mar. 10, 1979 W 92-87 (N) Feb. 9, 1980 L 86-89 (A) Feb. 23, 1980 W 103-72 (H) Feb. 14, 1981 W 81-75 (A) Feb. 25, 1981 W 93-59 (H) Jan. 30, 1982 W 86-77 (H) Feb. 19, 1982 L 78-80 (A) Mar. 14, 1982 W 71-64 (H) Dec. 4, 1982 W 89-77 (H) Dec. 19, 1983 L 79-81 (A) Nov. 26, 1993 W 84-53 (H) 12/13 Dec. 17, 2011 W 77-59 (H)		<b>YALE (1-0)</b> (Home: 1-0) Jan. 4, 2009 W 78-71 (H)			
<b>TEXAS SOUTHERN (1-0)</b> (Home: 1-0) Dec. 14, 2007 W 64-29 (H)		<b>VALPARAISO (1-0)</b> (Home: 1-0) Nov. 25, 2011 W 60-32 (H)		<b>WESTERN ILLINOIS (1-0)</b> (Home: 1-0) Nov. 24, 1989 W 78-59 (H)		<b>Key: *OT; **2OT</b>					
<b>TEXAS STATE (2-1)</b> (Home: 2-0, Away: 0-1) Dec. 5, 1991 L 59-64 (A) Dec. 19, 1992 W 78-57 (H) 13/13 Dec. 1, 2010 W 67-35 (H)		<b>VANDERBILT (1-4)</b> (Home: 0-2, Away: 1-2) Nov. 30, 1991 L 69-79 (H) 6/9 Mar. 19, 2001 L 59-65 (A) 20/21 10/13 Nov. 15, 2001 L 51-72 (A) 12/12 3/3 Nov. 12, 2006 L 76-81 (H) 16/15 Dec. 9, 2007 W 62-51 (A) 20/17		<b>WESTERN KENTUCKY (1-1)</b> (Home: 1-1) Dec. 27, 1991 W 71-68 (N) * 11/12 Nov. 17, 2014 L 78-79 (H) * RV/RV		<b>WESTERN MICHIGAN (1-0)</b> (Home: 1-0) Nov. 27, 1999 W 79-62 (H)					
<b>TEXAS TECH (5-17)</b> (Home: 2-7, Away: 1-7, Neutral: 2-3) Dec. 5, 1980 W 67-56 (N) Dec. 1, 1984 L 56-79 (H) Nov. 29, 1985 L 58-69 (A) Mar. 27, 1993 L 54-79 (N) 10/10 5/6 Jan. 11, 1997 W 63-49 (H) 7/7 Jan. 17, 1998 L 40-80 (A) 5/6 Mar. 4, 1998 L 49-80 (N) 6/5 Feb. 24, 1999 L 71-83 (H) 11/7 Jan. 12, 2000 L 50-75 (A) 16/14 Mar. 8, 2000 L 60-76 (N) 6/7 Feb. 21, 2001 L 61-68 (H) 16/20 15/13 Feb. 3, 2002 W 74-69 (A) * 17/17 13/16 Jan. 26, 2003 L 58-80 (H) 7/7 Feb. 28, 2004 L 51-60 (A) 14/13 8/9 Jan. 15, 2005 L 41-87 (H) 13/13 Feb. 11, 2006 L 56-76 (A) Feb. 3, 2007 W 70-67 (H) Mar. 6, 2007 W 71-67 (N) Jan. 26, 2008 L 44-62 (A) Jan. 28, 2009 L 60-66 (H) Jan. 12, 2010 L 61-74 (A) Feb. 12, 2011 L 44-72 (H)		<b>VERMONT (1-0)</b> (Home: 1-0) Nov. 24, 1995 W 73-68 (H) 11/11		<b>WESTERN MICHIGAN (1-0)</b> (Home: 1-0) Nov. 27, 1999 W 79-62 (H)							
<b>TULANE (1-1)</b> (Home: 1-0, Neutral: 0-1) Mar. 15, 1996 W 83-75 (H) 17/17 Dec. 6, 1997 L 62-63 (N) 16/16 22/22		<b>VILLANOVA (2-3)</b> (Home: 2-1, Away: 0-1, Neutral: 0-1) Jan. 10, 1980 L 58-61 (A) Nov. 30, 2002 L 54-59 (H) Mar. 29, 2003 L 51-53 (N) 11/12 Mar. 27, 2008 W 64-58 (H) Mar. 22, 2012 W 48-47 (H)									
<b>UCLA (5-6)</b> (Home: 2-3, Away: 2-3, Neutral: 1-0) Dec. 22, 1983 L 66-91 (A) Dec. 22, 1984 L 70-77 (H) Dec. 2, 2000 W 88-63 (H) Dec. 8, 2001 W 79-48 (A) 15/14 Jan. 29, 2012 L 54-62 (H) * Feb. 1, 2013 L 46-62 (A) 22/23 18/19 Jan. 5, 2014 W 61-59 (A) 12/14 Feb. 28, 2014 W 62-42 (H) Mar. 6, 2014 W 76-65 (N) Jan. 11, 2015 L 84-90 (H) Feb. 6, 2015 L 65-72 (A)											



# ALL-TIME SERIES STANDINGS

Colorado					Colorado					Colorado				
School	Won	Lost	Last Meeting	Date	School	Won	Lost	Last Meeting	Date	School	Won	Lost	Last Meeting	Date
Adams State .....	2	0	W 106-54	11-23-85	Fresno State .....	0	1	L 69-70*	1-7-87	North Dakota State .....	1	0	W 87-69	12-30-78
Air Force .....	3	0	W 80-47	12-5-01	George Washington .....	2	0	W 77-61	3-23-95	<b>Northern Arizona .....</b>	<b>14</b>	<b>2</b>	<b>W 84-60</b>	<b>11-11-11</b>
Albany .....	1	0	W 93-43	11-17-00	Georgia .....	0	1	L 79-82	3-25-95	<b>Northern Colorado .....</b>	<b>10</b>	<b>6</b>	<b>W 54-42</b>	<b>3-4-12</b>
Alcorn State .....	2	0	W 83-33	11-15-13	Georgia Southern .....	1	0	W 62-50	11-27-09	Northern Illinois .....	1	0	W 78-49	12-2-94
American .....	1	0	W 90-70	12-4-98	Georgia Tech .....	0	1	L 56-76	11-21-84	Northern Iowa .....	0	1	L 65-74*	11-25-05
<b>Arizona .....</b>	<b>14</b>	<b>3</b>	<b>W 66-51</b>	<b>2-27-15</b>	Gonzaga .....	3	0	W 82-68	3-24-08	Northern State .....	1	0	W 99-73	12-29-77
<b>Arizona State .....</b>	<b>11</b>	<b>6</b>	<b>L 46-59</b>	<b>3-1-15</b>	Grambling State .....	1	0	W 92-43	12-30-09	Northwestern (La.) St....	1	0	W 71-62	12-29-95
Arkansas .....	2	1	W 73-71	11-21-95	Hartford .....	1	0	W 69-40	11-29-02	Notre Dame .....	3	0	W 67-63*	11-15-03
Arkansas-Pine Bluff.....	1	0	W 73-39	12-2-08	Harvard .....	2	0	W 67-65	11-28-09	Oakland.....	1	0	W 74-60	12-30-00
Arkansas State .....	1	0	W 80-69	11-22-14	Hawaii .....	2	0	W 67-55	1-4-09	Ohio State .....	0	3	L 67-72	12-28-88
Auburn.....	0	1	L 61-68	3-17-96	Helping Hand.....	1	0	W 79-83	11-11-77	Oklahoma .....	34	22	L 73-68	2-23-11
Baylor.....	8	12	L 59-81	3-5-11	Holy Cross .....	1	1	W 83-49	3-16-95	Oklahoma City.....	1	0	W 68-41	1-9-82
Boston University.....	1	0	W 94-56	12-1-90	Houston .....	1	1	W 88-58	11-24-01	Oklahoma State .....	26	26	L 70-78	3-25-12
Bowling Green.....	2	0	W 96-44	11-23-01	Howard .....	1	0	W 96-45	11-24-00	Old Dominion.....	1	1	W 84-67	11-14-03
Brigham Young.....	8	7	W 84-45	3-22-03	Idaho.....	3	0	W 70-65	11-11-12	Oral Roberts.....	1	0	W 78-49	11-9-01
Buffalo.....	2	0	W 98-47	1-3-04	Idaho State .....	7	1	W 73-57	12-30-08	<b>Oregon .....</b>	<b>7</b>	<b>10</b>	<b>W 84-69</b>	<b>2-22-15</b>
Butler.....	1	0	W 86-57	11-25-00	Illinois.....	4	2	W 79-56	12-7-14	<b>Oregon State.....</b>	<b>6</b>	<b>3</b>	<b>W 68-65</b>	<b>3-6-15</b>
<b>California .....</b>	<b>5</b>	<b>8</b>	<b>L 55-68</b>	<b>3-7-15</b>	Illinois-Chicago .....	1	0	W 63-49	11-20-09	Pacific .....	2	0	W 84-57	12-8-05
UC-Irvine.....	3	0	W 61-56	11-15-09	Illinois State.....	1	1	L 60-72	11-30-89	Pacific Christian .....	1	0	W 108-43	11-18-81
UC Riverside .....	2	0	W 71-62	3-17-11	Indiana .....	0	1	L 66-69	12-6-85	Penn.....	2	0	W 69-49	11-26-04
UC Santa Barbara.....	1	3	L 49-76	3-20-04	Iowa.....	3	2	L 63-78	12-7-14	Penn State .....	0	2	L 57-76	12-2-95
Cal Poly-Pomona.....	0	1	L 68-74	12-18-87	Iowa State.....	37	30	L 45-71	2-19-11	Pepperdine .....	3	0	W 63-55	1-3-09
Cal State Bakersfield .....	1	0	W 76-61	12-28-06	Jacksonville State.....	1	0	W 64-29	12-14-07	Peru State .....	1	0	W 88-35	12-28-77
Cal State-Fullerton.....	4	1	L 77-89	12-7-06	Kansas .....	33	36	L 52-67	3-23-13	Phillips .....	0	1	L 73-76	12-4-77
Cal State Northridge.....	1	0	W 80-64	11-19-06	Kansas State .....	33	35	L 51-78	2-16-11	Portland State.....	0	1	L 55-57	12-20-83
UCF .....	1	0	W 86-59	11-16-08	<b>Long Beach State .....</b>	<b>2</b>	<b>3</b>	<b>L 56-62</b>	<b>12-30-14</b>	Providence.....	1	1	L 90-91	12-2-90
Central Michigan.....	2	0	W 71-49	11-29-97	Louisiana State .....	2	2	L 44-75	11-27-04	Puerto Rico-Mayaguez ...	1	0	W 90-42	12-20-05
Charleston .....	1	0	W 81-66	12-20-85	Louisiana Tech .....	1	3	L 61-65	11-25-95	Purdue .....	2	0	W 79-64	12-3-95
Charlotte.....	1	0	W 78-65	11-25-06	Louisville .....	1	1	L 62-69	12-21-13	Redlands .....	1	0	W 107-49	1-14-78
Colgate .....	1	0	W 74-52	12-30-10	Loyola Chicago.....	1	0	W 65-34	11-27-10	Regis .....	1	0	W 76-38	11-12-10
Colorado College.....	2	0	W 83-58	2-15-83	<b>Loyola Marymount.....</b>	<b>1</b>	<b>1</b>	<b>W 75-58</b>	<b>11-19-04</b>	Rice.....	4	0	W 73-58	11-30-13
<b>Colorado State .....</b>	<b>35</b>	<b>11</b>	<b>W 87-81**</b>	<b>11-29-14</b>	Manhattan .....	1	0	W 73-61	1-2-05	Rutgers .....	1	0	W 79-47	12-28-93
Colo. Women's College...	3	0	W 89-67	12-16-81	Marshall .....	1	0	W 69-49	3-13-97	Saint Francis (Ind.).....	1	0	W 94-54	1-3-81
Creighton .....	2	2	W 52-49	12-21-11	Marquette.....	1	1	L 72-86	4-2-08	Saint Francis (Pa.).....	1	0	W 114-52	11-28-94
Dartmouth.....	1	0	W 57-43	12-21-07	<b>Massachusetts.....</b>	<b>0</b>	<b>1</b>	<b>L 62-70</b>	<b>11-28-08</b>	Saint John's.....	1	0	W 79-62	11-28-87
Dayton.....	1	1	L 50-70	12-19-10	Miami (Ohio) .....	1	0	W 82-68	11-28-98	Saint Joseph's.....	1	0	W 77-67	1-9-80
Delaware .....	1	0	W 84-68	12-22-85	Michigan .....	0	2	L 77-63	11-21-99	Saint Louis .....	1	0	W 76-63	12-22-08
Delta State .....	1	0	W 83-65	1-30-81	Minnesota .....	1	4	L 78-87	11-22-09	Saint Mary's.....	3	0	W 79-76*	12-3-77
Denver .....	8	2	W 77-49	11-25-14	Mississippi State .....	1	0	W 95-59	12-4-92	Sam Houston State .....	1	0	W 99-60	12-24-00
Detroit Mercy .....	1	0	W 86-43	11-24-02	<b>Missouri .....</b>	<b>42</b>	<b>28</b>	<b>L 50-53</b>	<b>12-12-14</b>	San Diego.....	3	0	W 83-44	11-20-01
Drake.....	0	1	L 66-82	3-14-99	UMKC.....	4	0	W 78-55	11-18-12	San Diego State.....	2	1	W 67-53	11-24-12
Drexel.....	30	10	W 93-63	11-19-08	Missouri State.....	3	0	W 87-59	11-28-14	San Francisco.....	4	2	W 84-66	11-30-11
Duke.....	1	0	W 78-64	1-5-80	Montana.....	1	2	L 68-69	12-7-96	San Jose State .....	2	0	W 97-89*	12-5-14
Eastern Illinois.....	1	0	W 78-72	3-16-88	Montana State.....	5	0	W 68-65	12-22-95	Santa Clara .....	2	0	W 71-57	11-19-10
Eastern Washington .....	2	0	W 52-48	11-19-86	Nebraska .....	41	28	W 64-61	3-2-11	Seton Hall .....	1	1	W 80-54	12-6-09
Evansville .....	2	0	W 55-53	11-26-10	Nevada.....	1	1	W 80-60	11-24-06	Siena .....	1	1	L 73-84	11-23-07
Flatirons.....	1	0	W 49-41	11-18-75	UNLV .....	0	5	L 74-84	3-18-89	Simpson .....	1	0	W 73-68	11-27-76
<b>Florida .....</b>	<b>1</b>	<b>1</b>	<b>L 50-61</b>	<b>12-27-01</b>	New Mexico .....	8	6	W 85-53	11-23-13	South Dakota .....	1	0	W 64-55	3-19-12
Florida International .....	1	0	W 74-71	1-4-93	New Mexico State .....	10	2	W 63-56	11-15-95	South Dakota State.....	1	1	L 58-80	12-13-06
Florida State .....	0	1	L 60-66	11-23-84	New South Wales .....	0	1	L 55-103	12-10-76	South Florida .....	0	1	L 59-72	12-21-05
Fordham.....	2	0	W 82-54	12-7-98	North Carolina.....	1	0	W 86-67	3-24-03	Southern .....	1	0	W 88-61	3-15-02
Fort Carson .....	1	0	W 134-33	12-16-80	North Carolina State.....	1	0	W 67-72	2-1-97	South Alabama.....	1	0	W 94-61	11-29-13
Fort Hays State .....	1	0	W 89-37	1-5-83	North Dakota .....	2	0	W 69-59	11-15-14	<b>Southern California .....</b>	<b>5</b>	<b>8</b>	<b>W 75-63</b>	<b>3-5-15</b>

# ALL-TIME SERIES STANDINGS



School	Colorado		Last Meeting	Date
	Won	Lost		
Southern Illinois .....	3	1	W 79-51	12-20-98
SMU .....	1	0	W 74-56	11-30-96
Southern Utah.....	4	0	W 79-68	3-22-14
Southwest Louisiana .....	1	0	W 73-50	12-5-93
Sportsmen of Iowa.....	1	0	W 73-58	11-26-76
<b>Stanford .....</b>	<b>4</b>	<b>13</b>	<b>L 55-62</b>	<b>1-3-15</b>
Stephen F. Austin .....	3	0	W 66-57	3-15-97
Syracuse.....	2	1	W 80-45	12-30-03
Temple.....	1	0	W 64-35	1-2-93
Temple Junior College ...	0	1	L 71-76	11-20-76
Tennessee.....	1	3	L 67-75	3-22-97
Tennessee-Martin.....	1	0	W 78-67	11-21-10
Texas .....	4	16	L 50-67	1-30-11
Texas A&M.....	10	9	L 57-85	1-9-11
Texas A&M-Corpus Christi	2	0	W 75-48	11-23-12
Texas Christian .....	4	0	W 78-71	3-19-14
Texas-Pan American .....	1	0	W 67-49	12-20-11
UTEP.....	5	1	L 60-68	3-28-14
Texas Southern.....	1	0	W 64-29	12-14-07
Texas State.....	2	1	W 67-35	12-1-10
Texas Tech.....	5	17	L 44-72	2-12-11
Tulane.....	1	1	L 62-63	12-6-97
<b>UCLA.....</b>	<b>5</b>	<b>6</b>	<b>L 65-72</b>	<b>2-6-15</b>
<b>Utah .....</b>	<b>14</b>	<b>12</b>	<b>W 73-54</b>	<b>1-18-15</b>
Utah State.....	11	5	W 73-56	11-26-05
Utah Valley.....	1	0	W 81-45	12-22-12
Valparaiso.....	1	0	W 60-32	11-25-11
Vanderbilt.....	1	4	W 62-51	12-9-07
Vermont .....	1	0	W 73-68	11-24-95
Villanova .....	2	3	W 48-47	3-22-12
Virginia.....	0	3	L 59-74	1-2-10
<b>Washington.....</b>	<b>8</b>	<b>7</b>	<b>L 67-79</b>	<b>2-15-15</b>
<b>Washington State .....</b>	<b>4</b>	<b>4</b>	<b>W 72-51</b>	<b>2-13-15</b>
Wayland Baptist .....	0	2	L 56-70	11-14-81
Wayne State.....	1	0	W 57-47	11-30-77
Weber State .....	10	7	W 84-53	11-26-93
Western Illinois.....	1	0	W 78-59	11-24-89
Western Kentucky .....	1	1	L 78-79*	11-17-14
Western Michigan .....	1	0	W 79-62	11-27-99
Wichita State .....	2	0	W 89-52	11-22-91
Winnipeg.....	1	0	W 86-39	12-8-80
Wisconsin.....	0	1	L 59-60	3-21-82
Wright State .....	1	0	W 76-49	11-26-99
<b>Wyoming .....</b>	<b>37</b>	<b>9</b>	<b>W 76-71</b>	<b>12-21-14</b>
Yale.....	1	0	W 78-71	1-4-10

**TOTAL OVERALL .....** 749 489 (.605)

\*overtime game      2015-16 opponents in **boldface**.





# ALL-TIME CONFERENCE RECORDS

## AMERICA EAST

Albany.....	1-0
Vermont.....	1-0
<b>Total.....</b>	<b>(100%) 2-0</b>

## AMERICAN ATHLETIC

UCF.....	1-0
Houston.....	1-1
South Florida.....	0-1
Southern Methodist.....	1-0
Temple.....	1-0
Tulane.....	1-1
<b>Total.....</b>	<b>(62.5%) 5-3</b>

## ATLANTIC COAST

Duke.....	1-0
Florida State.....	0-1
Georgia Tech.....	0-1
Louisville.....	1-1
North Carolina.....	1-0
North Carolina State.....	1-0
Notre Dame.....	3-0
Syracuse.....	2-1
Virginia.....	0-3
<b>Total.....</b>	<b>(56.3%) 9-7</b>

## ATLANTIC 10

Dayton.....	1-1
Fordham.....	2-0
George Washington.....	2-0
Massachusetts.....	0-1
Saint Joseph's.....	1-0
Saint Louis.....	1-0
<b>Total.....</b>	<b>(81.8%) 7-2</b>

## BIG EAST

Creighton.....	2-2
Marquette.....	1-1
Providence.....	1-1
Saint John's.....	1-0
Seton Hall.....	1-1
Villanova.....	2-4
<b>Total.....</b>	<b>(47.1%) 8-9</b>

## BIG SKY

Eastern Washington.....	2-0
Idaho.....	3-0
Idaho State.....	7-1
Montana.....	1-2
Montana State.....	5-0
North Dakota.....	2-0
Northern Arizona.....	14-2
Northern Colorado.....	10-6
Portland State.....	0-1
Southern Utah.....	4-0
Weber State.....	11-7
<b>Total.....</b>	<b>(75.6%) 59-19</b>

## BIG TEN

Illinois.....	4-2
Indiana.....	0-1
Iowa.....	3-2
Michigan.....	0-2
Minnesota.....	1-4
Nebraska.....	41-28
Ohio State.....	0-3
Penn State.....	0-2
Rutgers.....	1-0
Wisconsin.....	1-1
<b>Total.....</b>	<b>(53.1%) 51-45</b>

## BIG 12

Baylor.....	8-12
Iowa State.....	37-30
Kansas.....	33-36
Kansas State.....	33-35
Oklahoma.....	34-22
Oklahoma State.....	26-26
Texas.....	4-16
Texas Christian.....	4-0
Texas Tech.....	5-17
<b>Total.....</b>	<b>(48.7%) 184-194</b>

## BIG WEST

UC-Irvine.....	3-0
UC-Santa Barbara.....	1-3
UC-Riverside.....	2-0
Cal State-Fullerton.....	4-1
Cal State Northridge.....	1-0
Hawaii.....	2-0
Long Beach State.....	2-3
<b>Total.....</b>	<b>(68.2%) 15-7</b>

## COLONIAL ATHLETIC ASSOCIATION

College of Charleston.....	1-0
Delaware.....	1-0
Drexel.....	1-1
<b>Total.....</b>	<b>(75.0%) 3-1</b>

## CONFERENCE USA

Charlotte.....	1-0
Florida International.....	1-0
Louisiana Tech.....	1-3
Marshall.....	1-0
Old Dominion.....	1-1
Rice.....	4-0
UTEP.....	5-1
Western Kentucky.....	1-1
<b>Total.....</b>	<b>(71.4%) 15-6</b>

## HORIZON LEAGUE

Detroit.....	1-0
Illinois-Chicago.....	1-0
Oakland.....	1-0
Valparaiso.....	1-0
Wright State.....	1-0
<b>Total.....</b>	<b>(100%) 5-0</b>

## IVY LEAGUE

Dartmouth.....	1-0
Harvard.....	2-0
Pennsylvania.....	2-0
Yale.....	1-0
<b>Total.....</b>	<b>(100%) 6-0</b>

## METRO ATLANTIC ATHLETIC

Manhattan.....	1-0
Siena.....	1-1
<b>Total.....</b>	<b>(66.7%) 2-1</b>

## MID-AMERICAN

Bowling Green.....	2-0
Buffalo.....	2-0
Central Michigan.....	2-0
Miami (Ohio).....	1-0
Northern Illinois.....	1-0
Western Michigan.....	1-0
<b>Total.....</b>	<b>(100%) 9-0</b>

## MIDEASTERN ATHLETIC

Howard.....	1-0
<b>Total.....</b>	<b>(100%) 1-0</b>

## MISSOURI VALLEY

Drake.....	0-1
Evansville.....	2-0
Illinois State.....	1-1
Loyola Chicago.....	1-0
Missouri State!.....	3-0
Northern Iowa.....	0-1
Southern Illinois.....	3-1
Wichita State.....	1-0
<b>Total.....</b>	<b>(73.3%) 11-4</b>

## MOUNTAIN WEST

Air Force.....	3-0
Colorado State.....	35-11
Fresno State.....	0-1
Nevada.....	1-1

New Mexico.....	8-6
San Diego State.....	2-1
San Jose State.....	2-0
Nevada-Las Vegas.....	0-5
Utah State.....	11-5
Wyoming.....	37-9
<b>Total.....</b>	<b>(71.7%) 99-39</b>

## NORTHEAST CONFERENCE

Saint Francis (Pa.).....	1-0
<b>Total.....</b>	<b>(100%) 1-0</b>

## OHIO VALLEY

Eastern Illinois.....	1-0
Jacksonville State.....	1-0
Tennessee-Martin.....	1-0
<b>Total.....</b>	<b>(100%) 3-0</b>

## PAC-12

Arizona.....	14-3
Arizona State.....	11-6
California.....	5-8
Oregon.....	7-10
Oregon State.....	6-3
Southern California.....	5-8
Stanford.....	4-13
UCLA.....	5-6
Utah.....	14-12
Washington.....	8-7
Washington State.....	4-4
<b>Total.....</b>	<b>(50.9%) 83-80</b>

## PATRIOT LEAGUE

American.....	1-0
Boston.....	1-0
Colgate.....	1-0
Holy Cross.....	1-1
<b>Total.....</b>	<b>(80.0%) 4-1</b>

## SOUTHEASTERN

Arkansas.....	2-1
Auburn.....	0-1
Florida.....	1-1
Georgia.....	0-1
Louisiana State.....	2-2
Mississippi State.....	1-0
Missouri.....	42-28
Tennessee.....	1-3
Texas A&M.....	10-9
Vanderbilt.....	1-4
<b>Total.....</b>	<b>(54.5%) 60-50</b>

## SOUTHLAND

Northwestern State.....	1-0
Sam Houston State.....	1-0
Stephen F. Austin.....	3-0
Texas A&M-Corpus Christi.....	2-0
<b>Total.....</b>	<b>(100%) 7-0</b>

## SOUTHWESTERN ATHLETIC

Alcorn State.....	2-0
Arkansas Pine Bluff.....	1-0
Grambling State.....	1-0
Southern.....	1-0
Texas Southern.....	1-0
<b>Total.....</b>	<b>(100%) 6-0</b>

## SUMMIT LEAGUE

Denver.....	8-2
North Dakota State%.....	1-0
Oral Roberts.....	1-0
South Dakota.....	1-0
South Dakota State.....	1-1
Western Illinois.....	1-0
<b>Total.....</b>	<b>(81.3%) 13-3</b>

## SUN BELT

Arkansas State.....	1-0
Georgia Southern.....	1-0
Louisiana-Lafayette*.....	1-0
South Alabama.....	1-0
Texas State.....	2-1
<b>Total.....</b>	<b>(87.5%) 6-1</b>

## WEST COAST

Brigham Young.....	8-7
Gonzaga.....	3-0
Loyola Marymount.....	1-1
Pacific.....	2-0
Pepperdine.....	3-0
San Diego.....	3-0
San Francisco.....	4-2
Santa Clara.....	2-0
<b>Total.....</b>	<b>(72.2%) 26-10</b>

## WESTERN ATHLETIC

Cal State Bakersfield\$.....	1-0
Missouri-Kansas City.....	4-0
New Mexico State.....	10-2
Texas-Pan American.....	1-0
Utah Valley.....	1-0
<b>Total.....</b>	<b>(89.5%) 17-2</b>

## NCAA DIVISION II

Adams State.....	2-0
Cal-Poly Pomona.....	0-1
Delta State.....	1-0
Fort Hays State.....	1-0
Northern State.....	1-0
Regis.....	1-0
<b>Total.....</b>	<b>(87.5%) 7-1</b>

## NCAA DIVISION III

Colorado College.....	2-0
Redlands.....	1-0
Simpson.....	1-0
<b>Total.....</b>	<b>(100%) 4-0</b>

## NAIA

St. Francis (Ind.).....	1-0
Wayland Baptist.....	0-2
<b>Total.....</b>	<b>(33%) 1-3</b>

## JUNIOR COLLEGE

Temple Junior College.....	0-1
<b>Total.....</b>	<b>(0%) 0-1</b>

## OTHERS

Colo. Women's College.....	3-0
Flatirons.....	1-0
Fort Carson.....	1-0
Helping Hand.....	1-0
New South Wales.....	0-1
Oklahoma City.....	1-0
Pacific Christian.....	1-0
Peru State.....	1-0
Phillips.....	0-1
Puerto Rico-Mayaguez.....	1-0
Saint Mary's (Kan.).....	3-0
Sportsmen of Iowa.....	1-0
Wayne State.....	1-0
Winnipeg.....	1-0
<b>Total.....</b>	<b>(88.9%) 16-2</b>

\*Formerly Southwest Louisiana.

!Missouri State was Southwest Missouri State until 2005.

%North Dakota State was a member of NCAA II at time of game

\$Game played in first year of transition to NCAA I

^Includes 6-6 record while UNC was a member of NCAA II